

NOTES - FLOOR PLANS

- 1 REFER TO SHEET A001 FOR ARCHITECTURAL GENERAL NOTES, & ANNOTATION LEGEND.
- 2 REFER TO A601 SERIES FOR PARTITION TYPES.
- 3 REFER TO ENLARGED PLANS AND INTERIOR ELEVATIONS FOR ADDITIONAL INFORMATION.
- 4 REFER TO MECHANICAL DRAWINGS FOR ALL HEATING VENTILATION AND AIR CONDITIONING EQUIPMENT LOCATIONS AND REQUIREMENTS.
- 5 REFER TO ELECTRICAL DRAWINGS FOR ALL POWER, LIGHTING AND ELECTRICAL EQUIPMENT LOCATIONS AND REQUIREMENTS.
- 6 REFER TO LOW VOLTAGE DRAWINGS FOR ALL COMMUNICATION EQUIPMENT LOCATIONS AND REQUIREMENTS.
- 7 ALL DIMENSIONS SHOWN ARE TO FACE OF WALL (LEFT TO RIGHT, BOTTOM TO TOP), TYPICAL UNLESS NOTED OTHERWISE.
- 8 ALL DOORS TO BE INSTALLED 4" FROM HINGE SIDE OF WALL - TYPICAL UNLESS NOTED OR DIMENSIONED OTHERWISE.
- 9 DIMENSIONS MARKED AS "CLEAR" DICTATES THE CLEAR DIMENSION FROM FINISH TO FINISH.
- 10 FIRE EXTINGUISHERS SHALL BE PROVIDED AND LOCATED IN ACCORDANCE WITH NFPA 10. THE MAXIMUM TRAVEL DISTANCE TO THE NEAREST FIRE EXTINGUISHER FROM ANY POINT IN THE BUILDING SHALL NOT EXCEED 75 FEET.



interior design

FOSTER PLAZA 9  
SUITE 200  
750 HOLIDAY DRIVE  
PITTSBURGH, PA 15220

CONSULTANTS

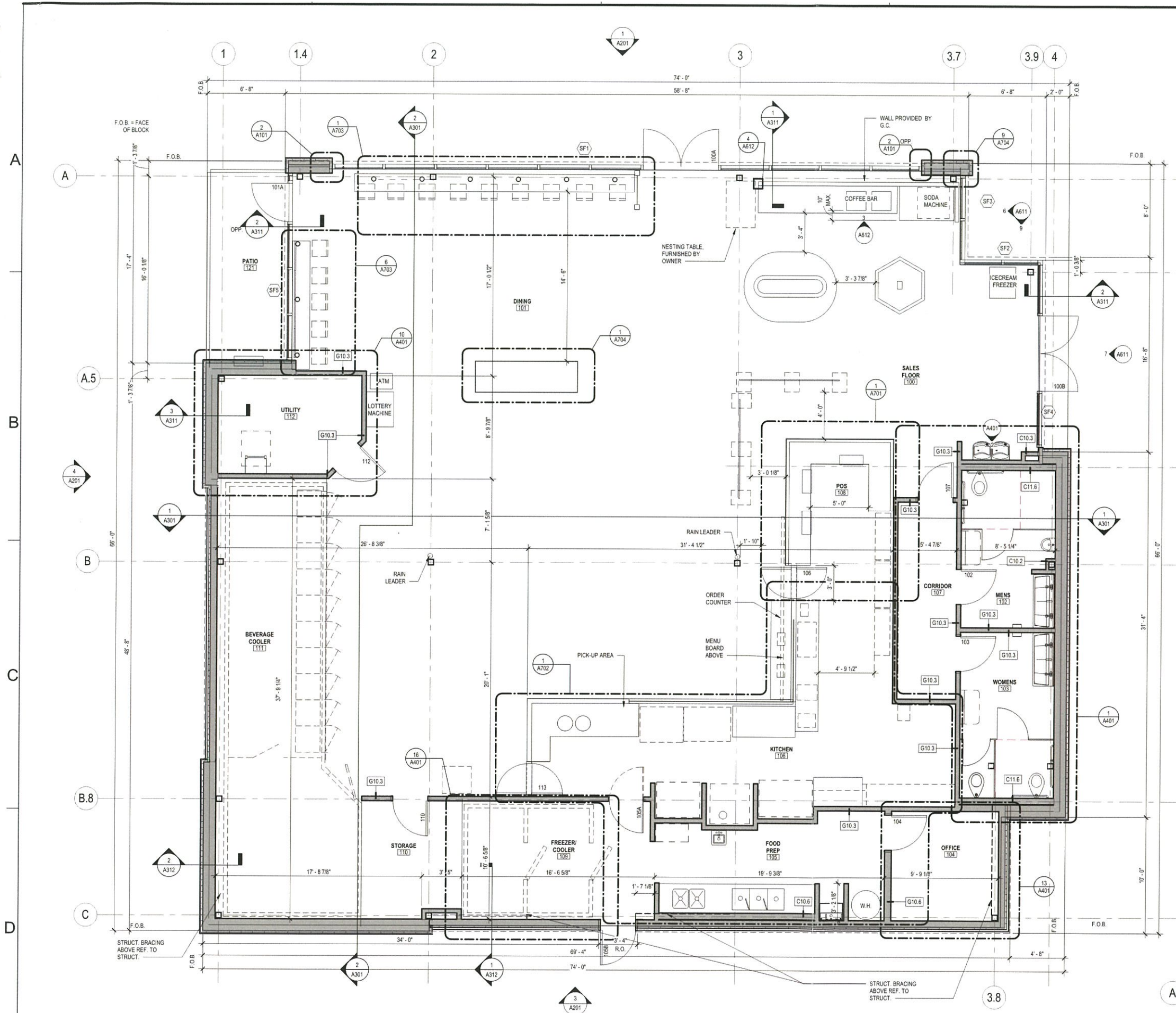
SEAL

NO.	DATE	DESCRIPTION	REVISIONS

AMERICAN NATURAL BRIDGEVILLE: SOUTH  
FAYETTE TOWNSHIP  
ALLEGHENY COUNTY, PENNSYLVANIA

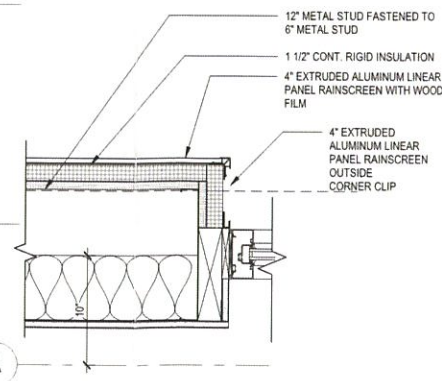
PROJECT NUMBER: 2019042.00  
DATE: 07-29-19 JMS  
SCALE: AS NOTED  
SHEET # A101

PERMIT SET



1 FLOOR PLAN  
SCALE: 1/4" = 1'-0"

2 PLAN DETAIL - EXTERIOR WALL  
SCALE: 1 1/2" = 1'-0"



RECEIVED  
SEP 16 2019

FLOOR PLAN

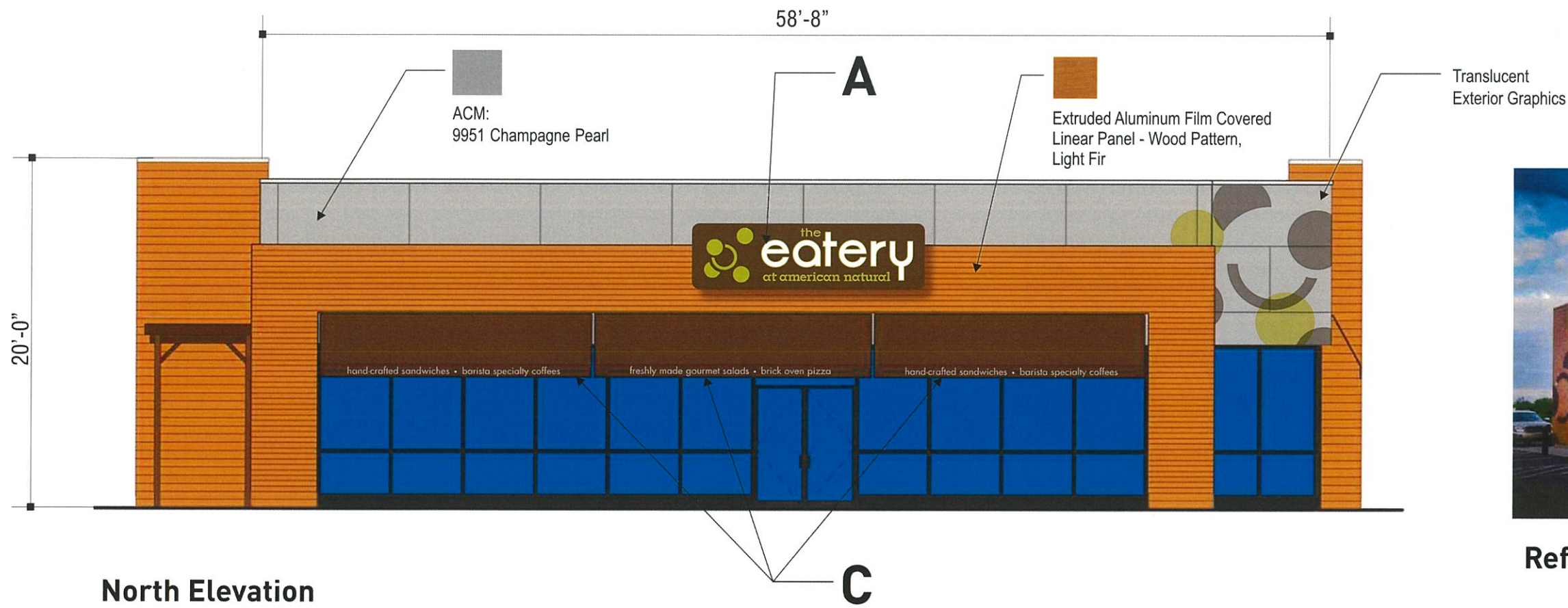


# american natural

Bridgeville  
South Fayette Township  
Allegheny Township, PA

RECEIVED  
SEP 16 2019

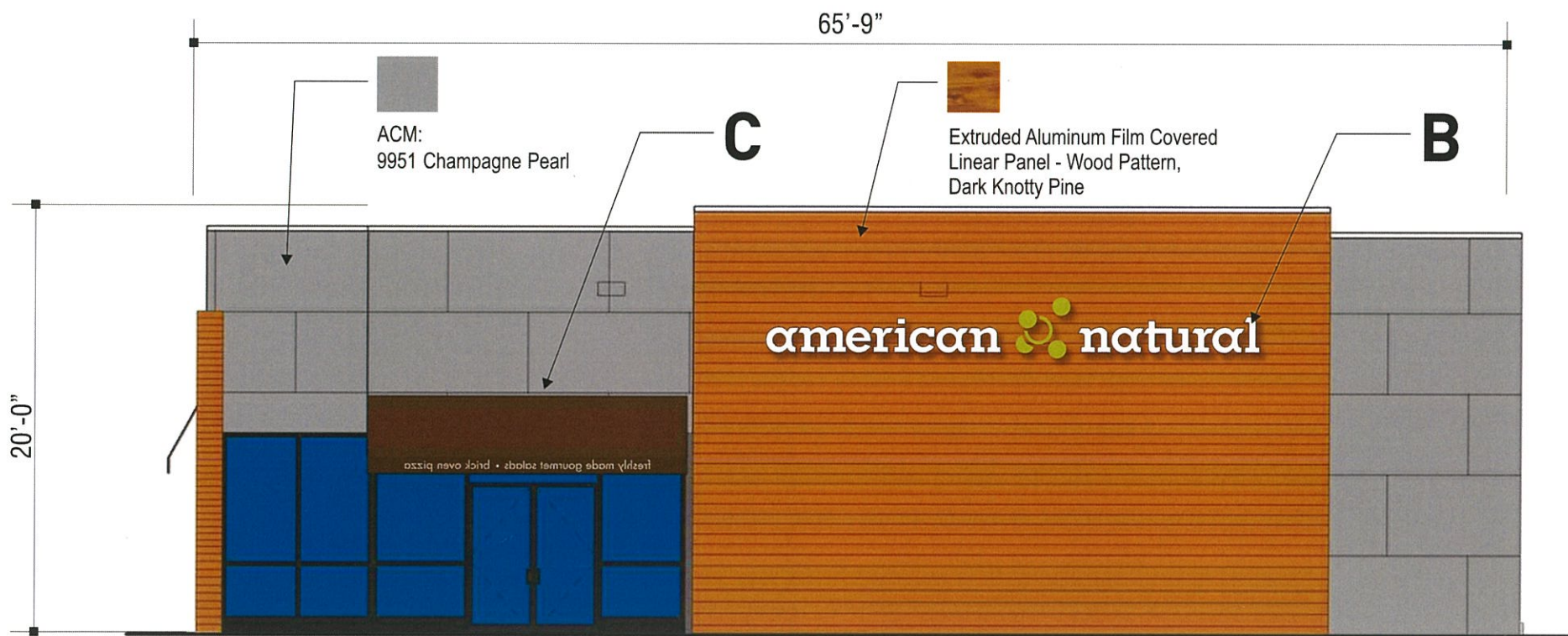
Contents / Index	Page
Site Plan	2
North & East Elevations	3
South & West Elevations	4
<b>A</b> S/F Internally Illuminate Cabinet Qty 1	5
<b>B</b> Face-Lit Channel Letters Qty 1	6
<b>C</b> Storefront Awnings Qty 4	7
<b>D</b> Face-Lit Channel Letters Qty 1	8
<b>E</b> D/F Int. Illum. Pylon Sign Qty 1	9
<b>F</b> Vinyl Canopy Letters Qty 1	10
<b>G</b> Vinyl Under Canopy Icon Qty 2	11
<b>H</b> Entrance Directional Sign Qty 2	12



North Elevation



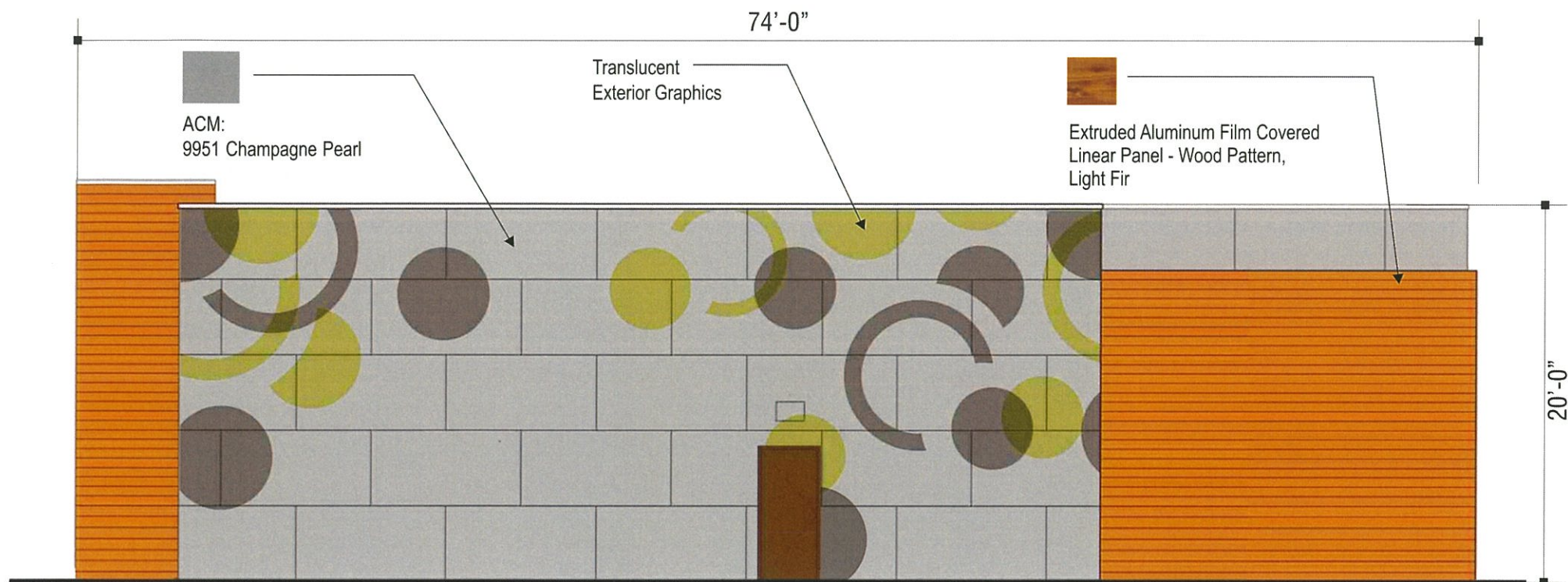
Reference Photo - Harmar Twp, PA



East Elevation

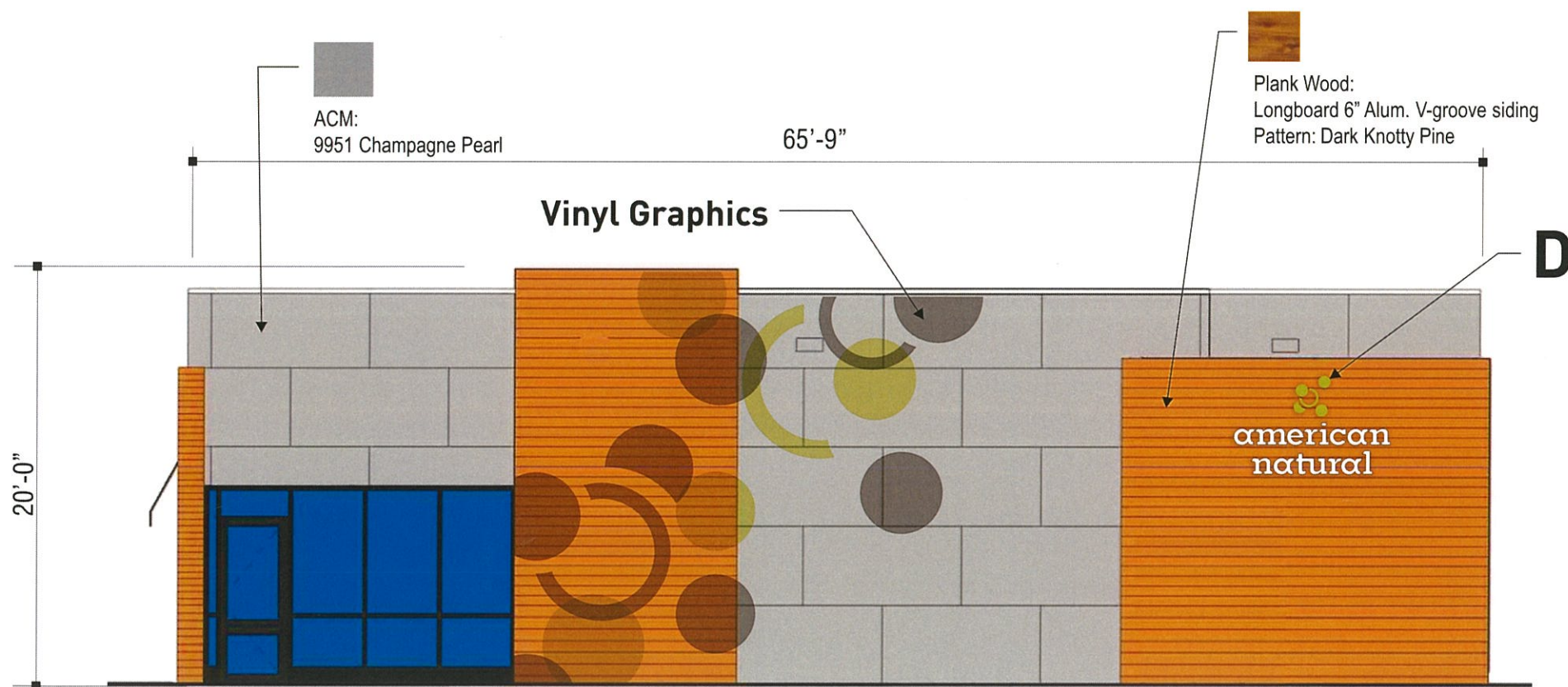


Reference Photo - Harmar Twp, PA



Reference Photo - Harmar Twp, PA

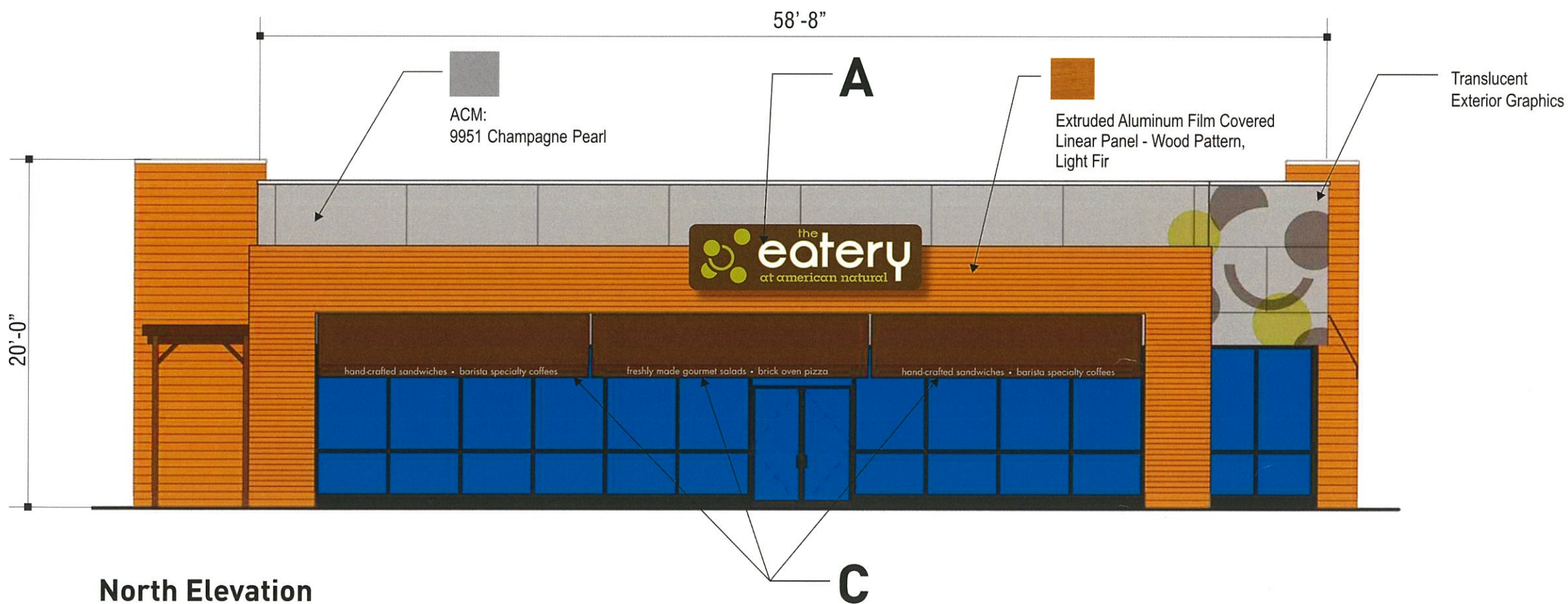
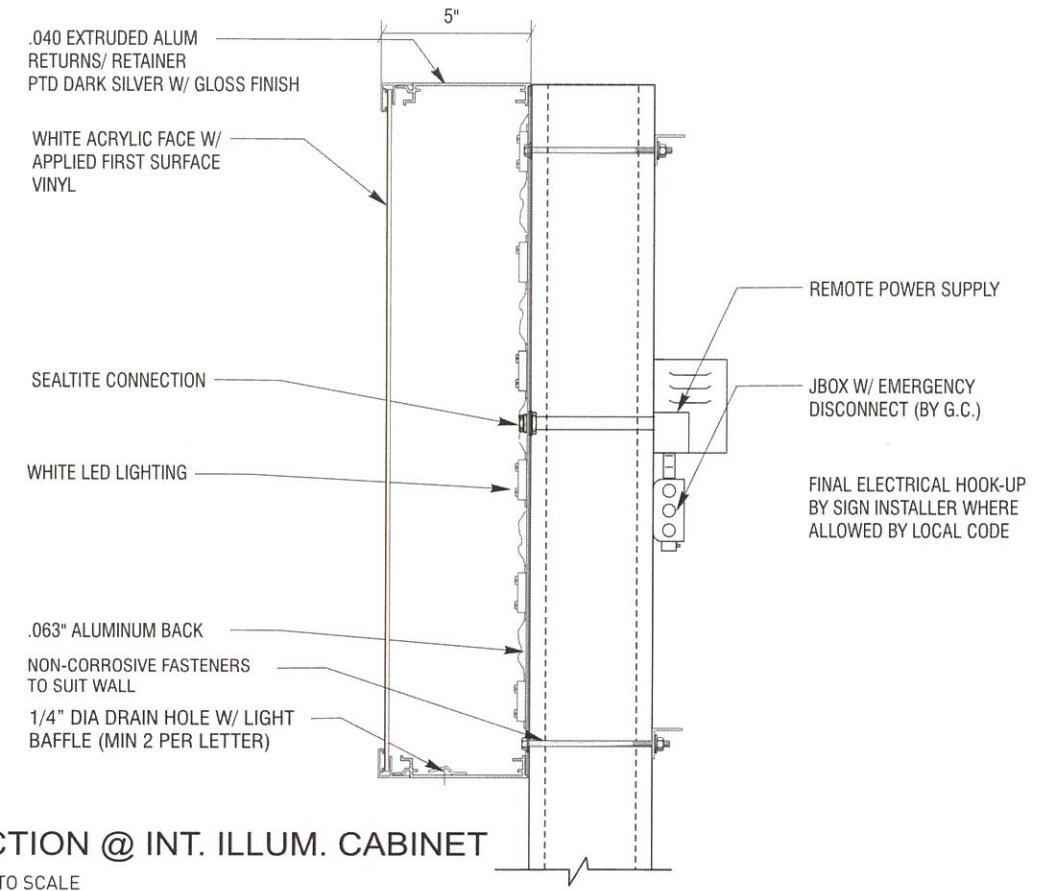
South Elevation



West Elevation

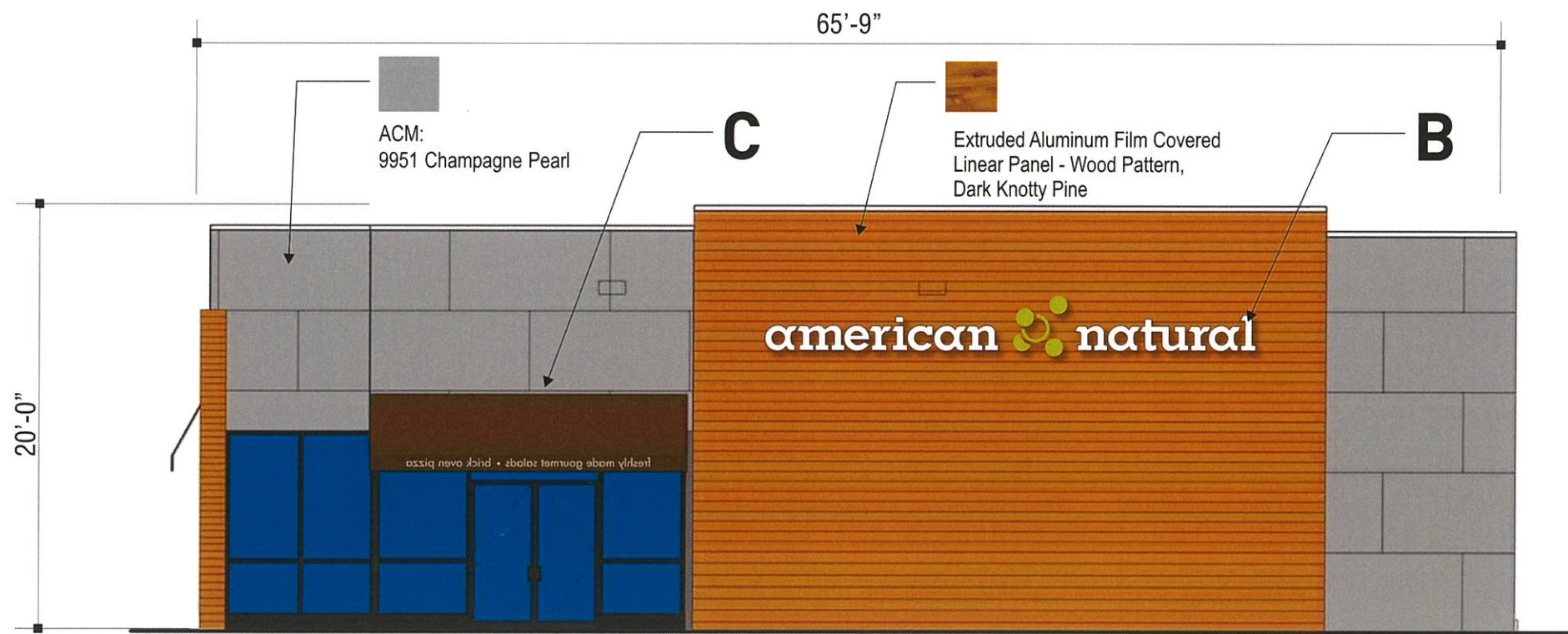


**A S/F Internally Illuminate Cabinet Qty 1 56.6 SQ. FT.**  
Scale: 1/2" = 1'-0"

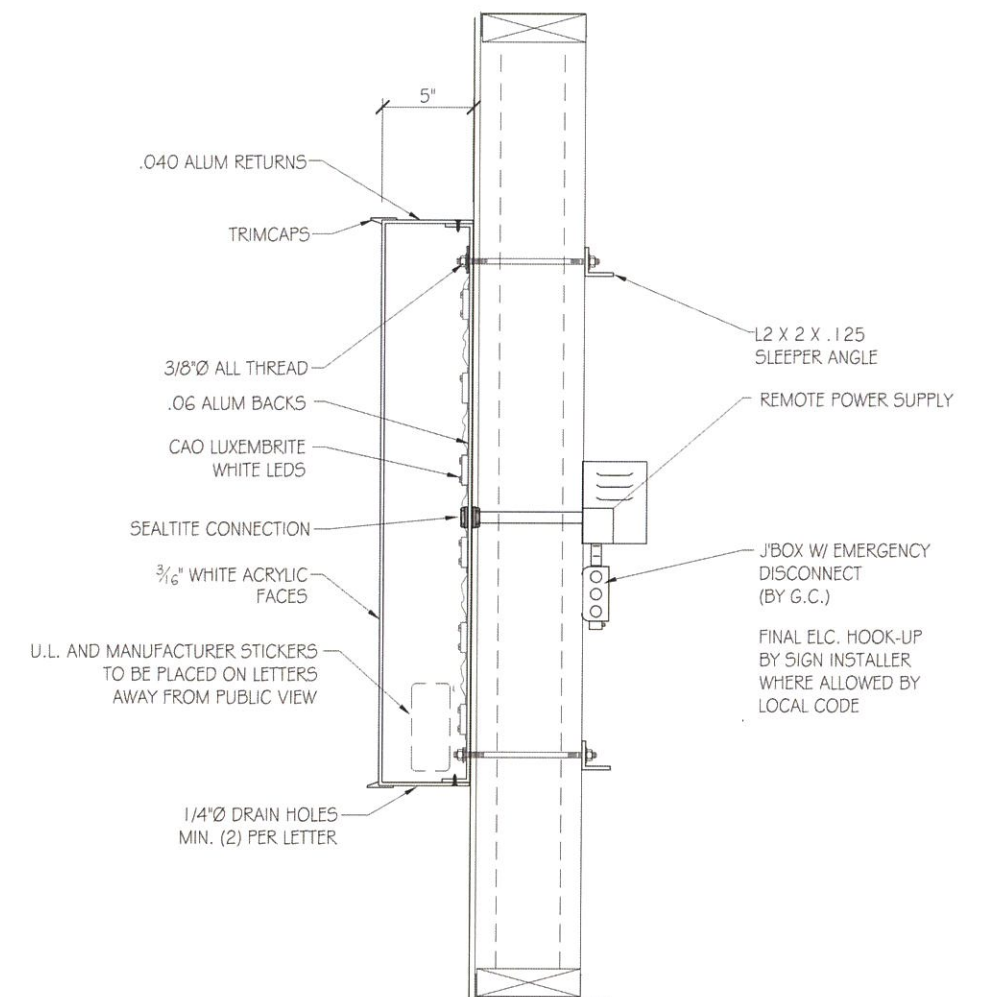




**B** Face-Lit Channel Letters Qty 1 73.1 SQ. FT.  
 Scale: 1/2" = 1'-0"



East Elevation



SECTION @ CHANNEL LETTER  
 NOT TO SCALE

Light Brown With Words:  
 Quantity: 2  
 Lengths: TBD  
 Space between awnings: 6"

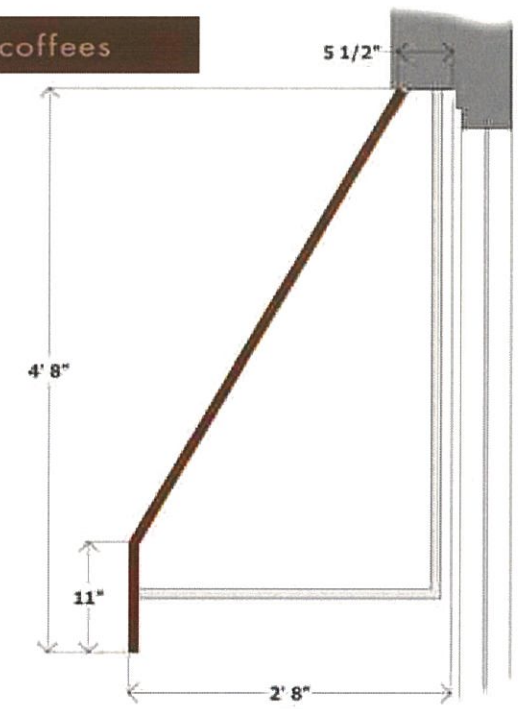


6" Max Copy

hand-crafted sandwiches • barista specialty coffees  
 brick oven pizza • hand-crafted sandwiches

Each awning to have a different message (final graphic TBD)

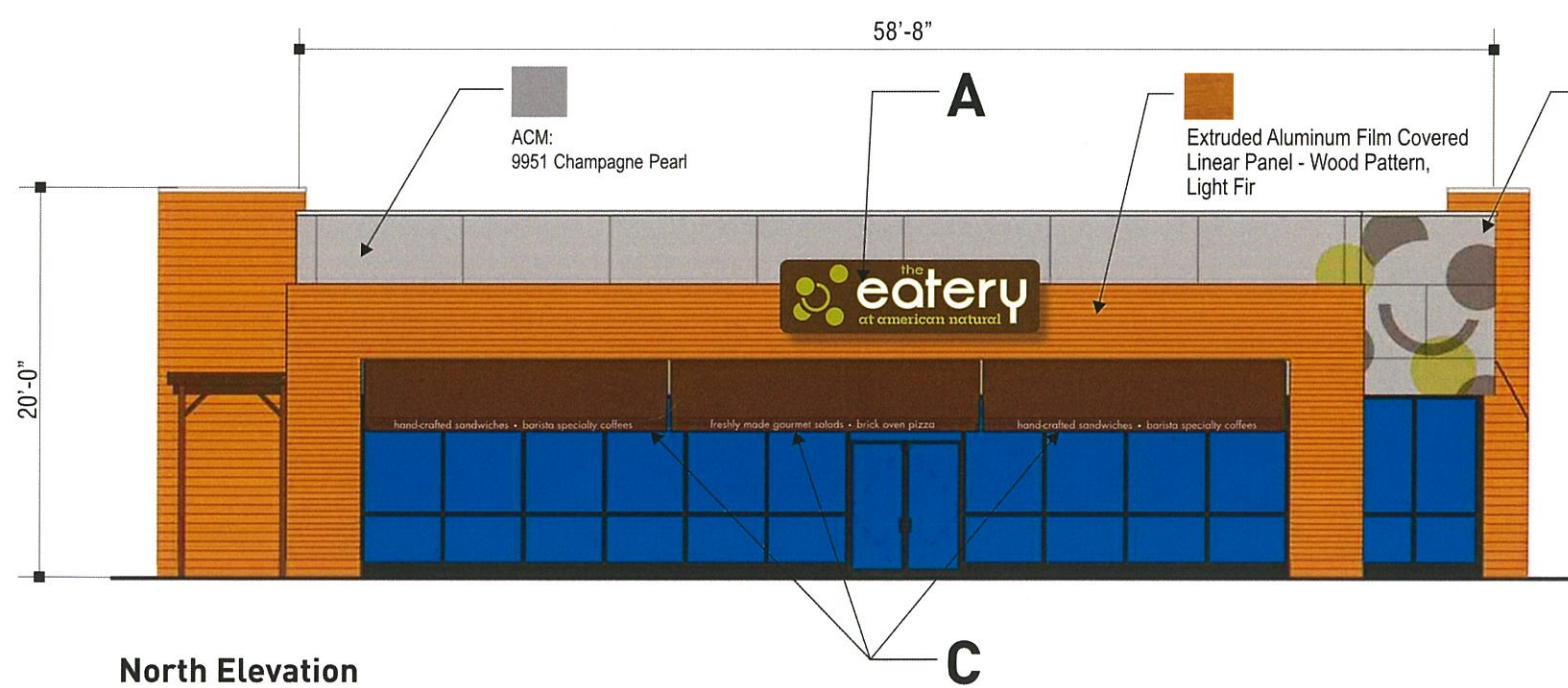
Copy is limited to 6" High



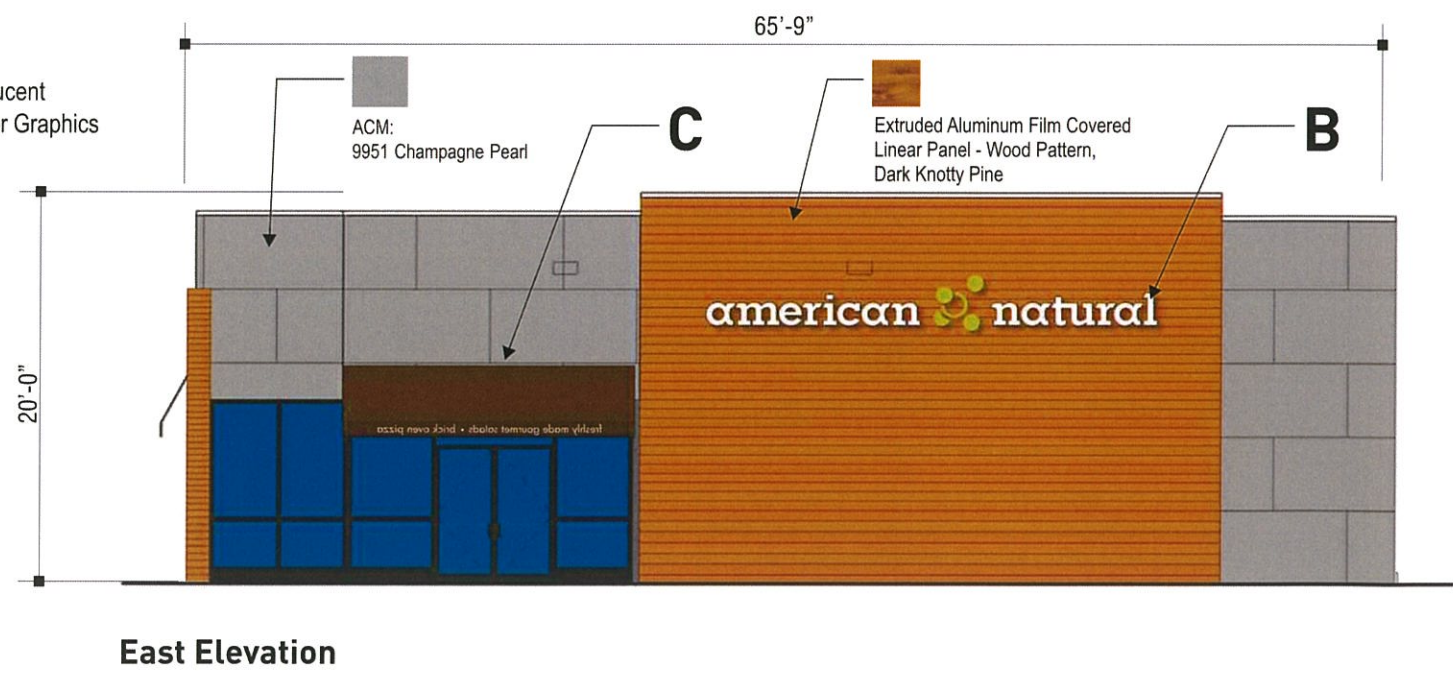
SECTION @ STOREFRONT AWNING  
 NOT TO SCALE

**C Storefront Awnings Qty 4**  
 Not to Scale

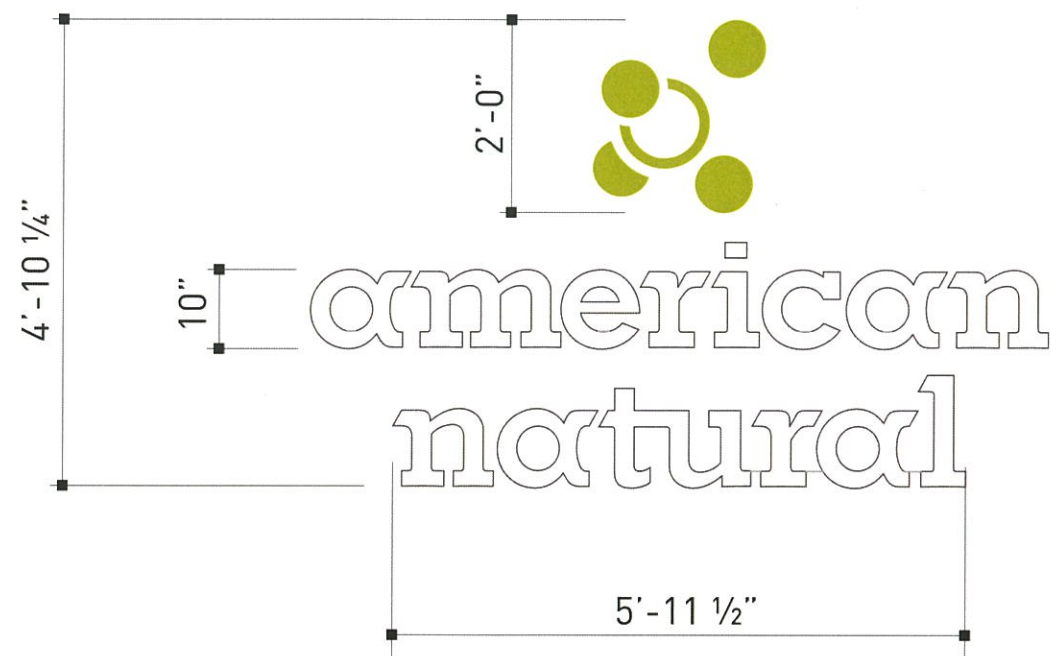
- Lightweight construction, material TBD
- Awning dimensions may change based on final building construction



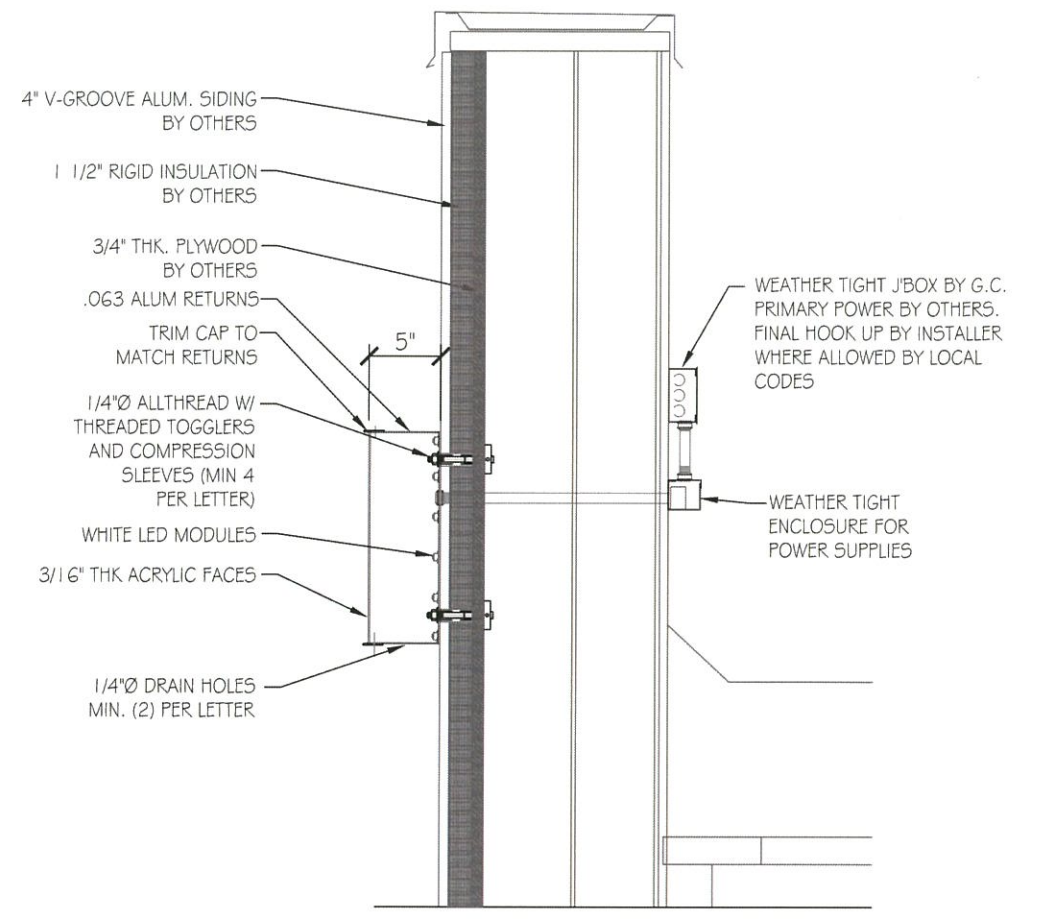
North Elevation



East Elevation



**D Face-Lit Channel Letters Qty 1 24.87 SQ. FT.**  
 Scale: 1/2" = 1'-0"



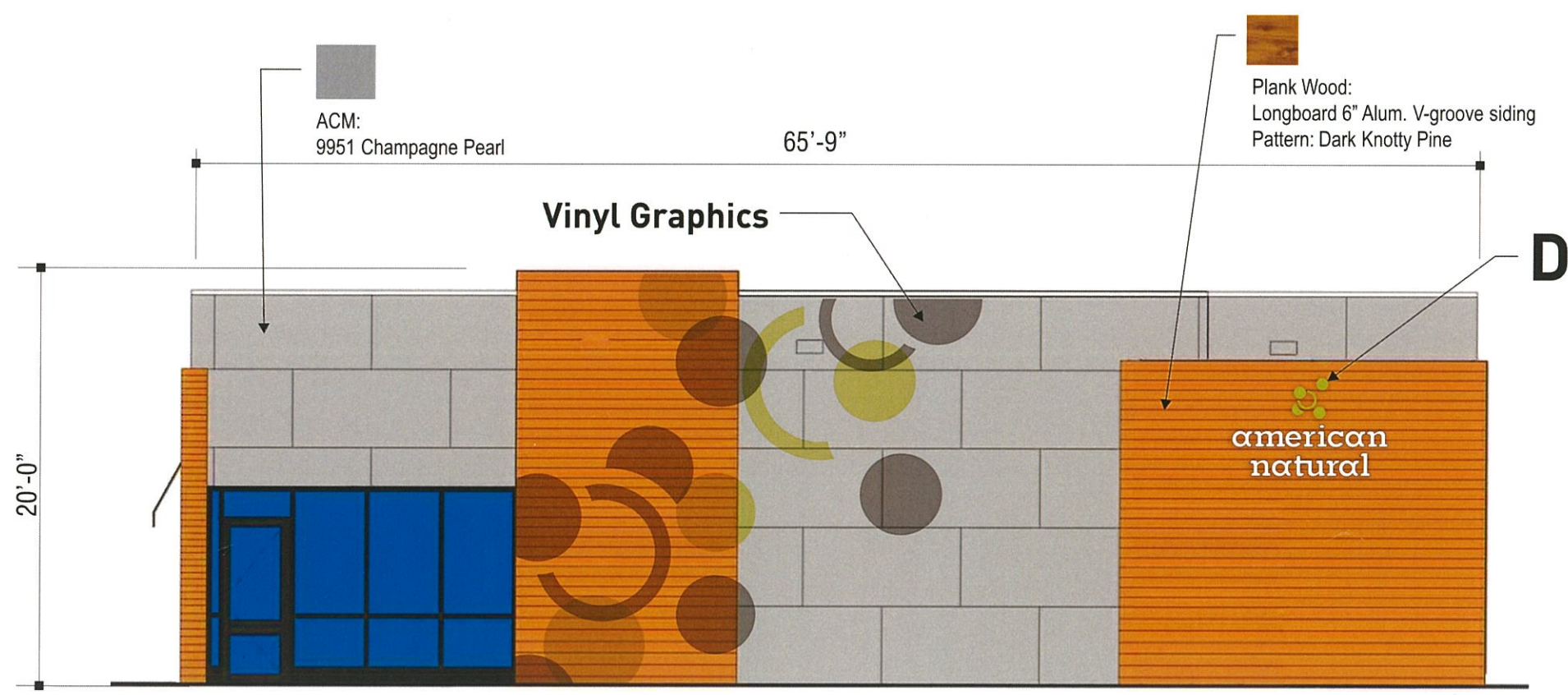
**TYP SECTION**  
 SCALE: N.T.S.

**SIGN INSTALLATION NOTES:**

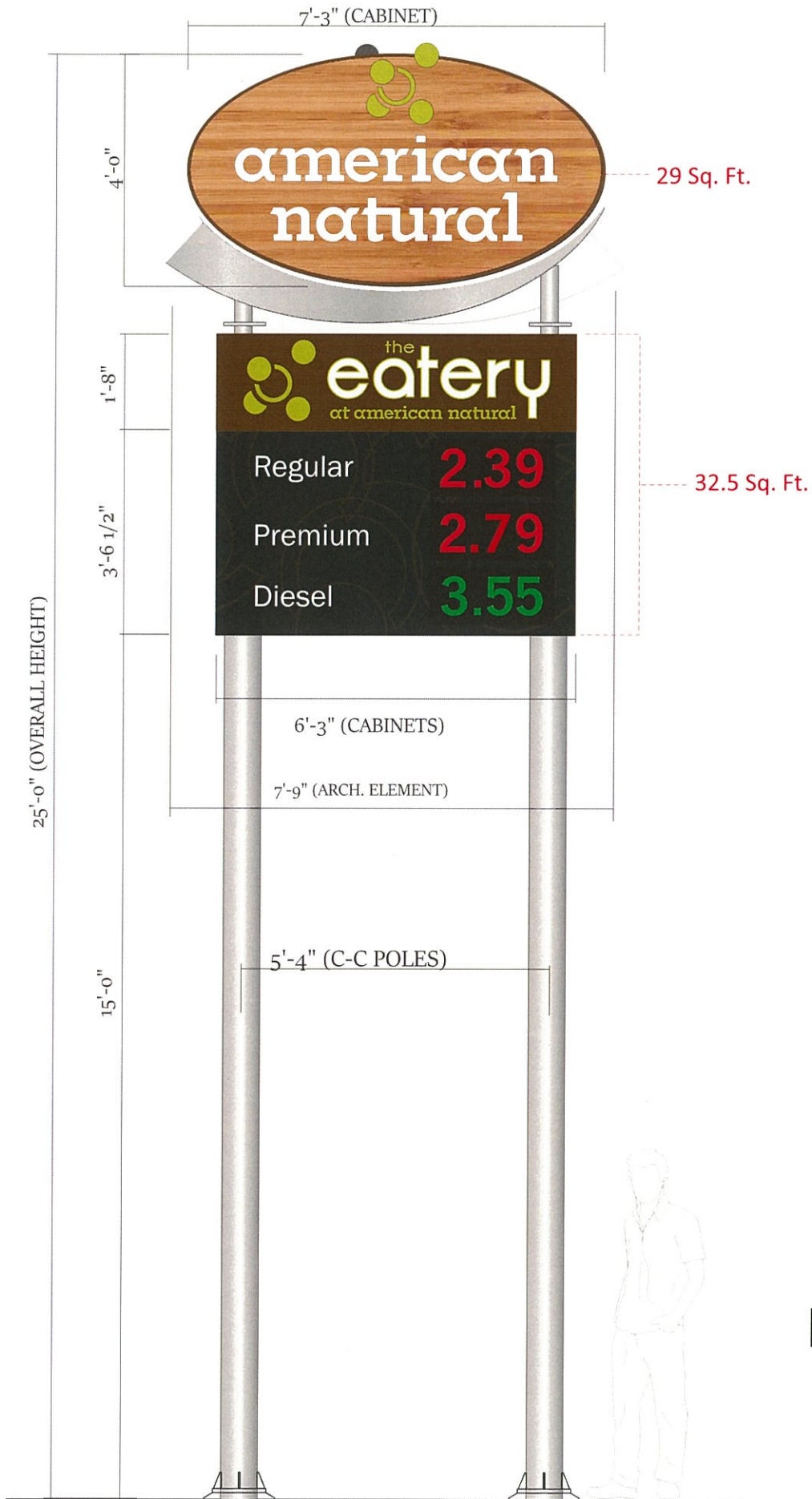
- ELECTRICAL CONTRACTOR IS RESPONSIBLE FOR INSTALLING J-BOXES, RIGID CONDUIT, AND MAKING FINAL CONNECTIONS.

**U.L. NOTE**  
 THIS SIGN IS INTENDED TO BE INSTALLED IN ACCORDANCE WITH THE REQUIREMENTS OF ARTICLE 600 OF THE NATIONAL ELECTRICAL CODE AND/OR OTHER APPLICABLE LOCAL CODES. THIS INCLUDES PROPER GROUNDING AND BONDING OF THE SIGN.

<b>ELECTRICAL LOAD</b>
3.0 AMPS @ 277 VOLTS
<b>ELECTRICAL REQMTS</b>
(1) 15 AMP CIRCUIT
-OR-
<b>ELECTRICAL LOAD</b>
5.6 AMPS @ 120 VOLTS
<b>ELECTRICAL REQMTS</b>
(1) 15 AMP CIRCUIT



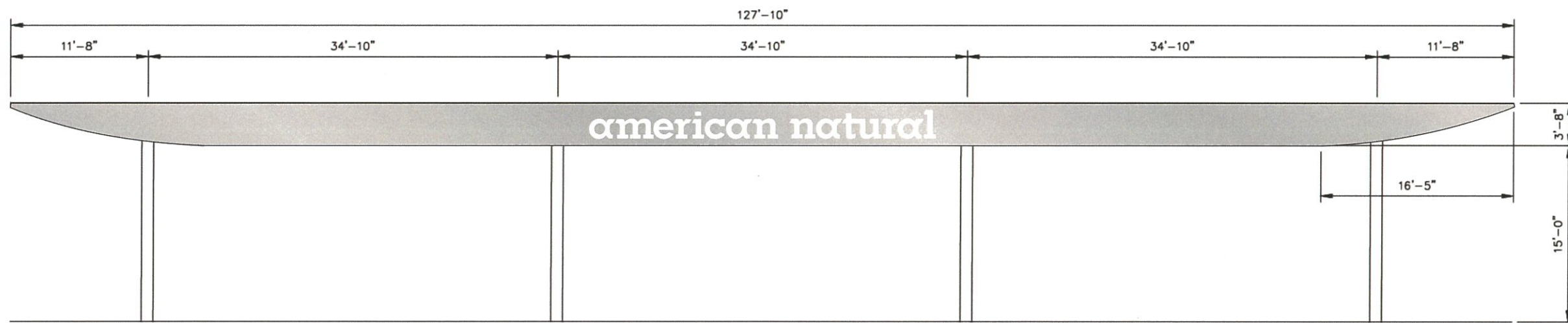
**West Elevation**



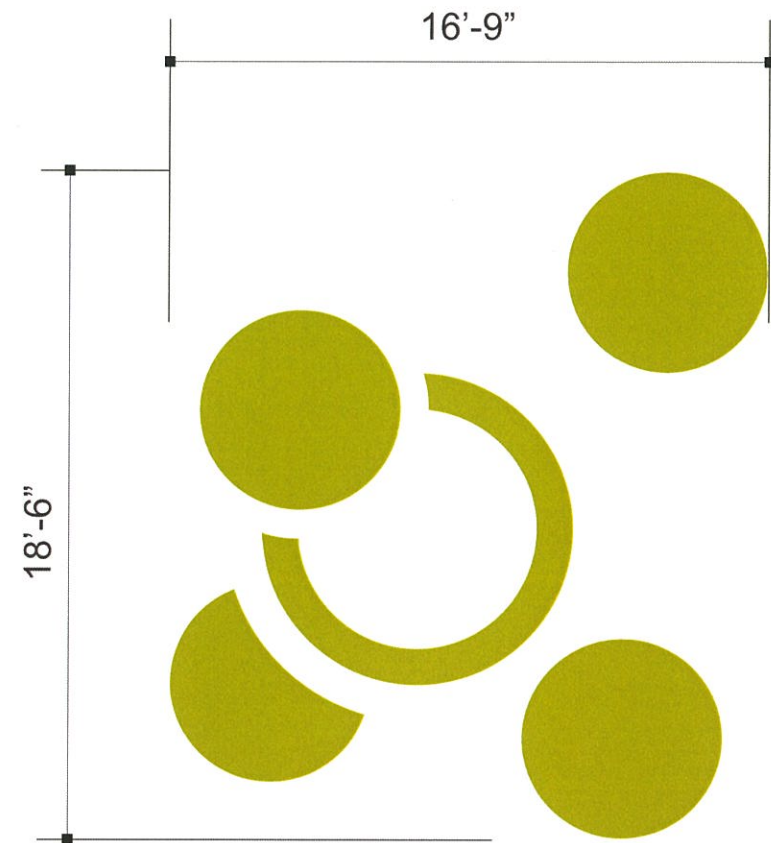
**E D/F Int. Illuminated Pylon Sign**  
 Scale : 1/4" = 1'-0"  
**Qty 1**  
**61.5 Total Sq. Ft.**



**F Gas Canopy Opaque Vinyl Copy**      **57.2 Sq. Ft. Qty 1**  
 Scale: 1/4" = 1'-0"



FRONT ELEVATION

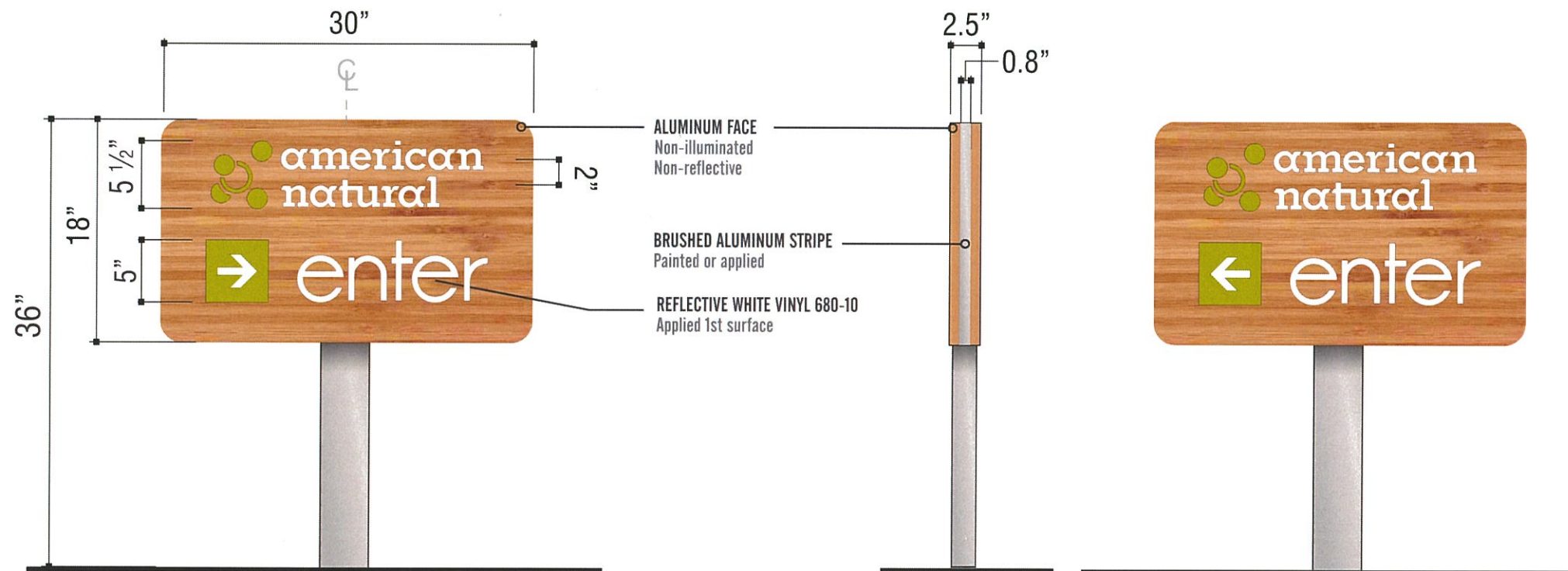


**G Non-Illuminated Applied Vinyl Icon Qty 2**  
 Scale: 1/8" = 1'-0"

Applied Translucent Vinyl Icon



**Gas Canopy Elevation - Perspective View**



**H** New Directional Sign Qty 2  
Scale: 1" = 1'-0"

Side View

Reverse Side

**Standard Colors**



Wood Pattern

PMS 583C

Brushed Aluminum