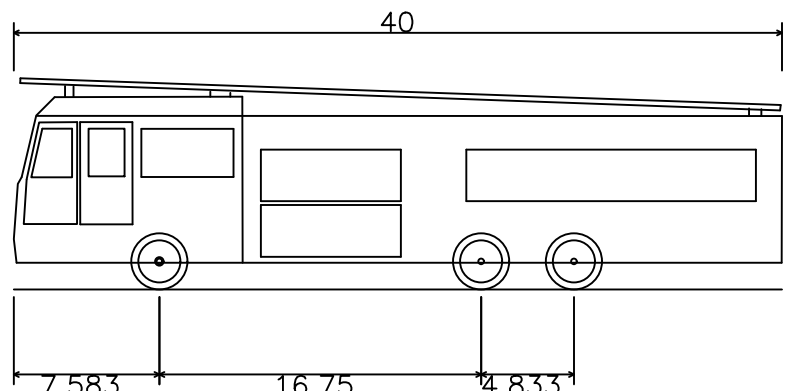
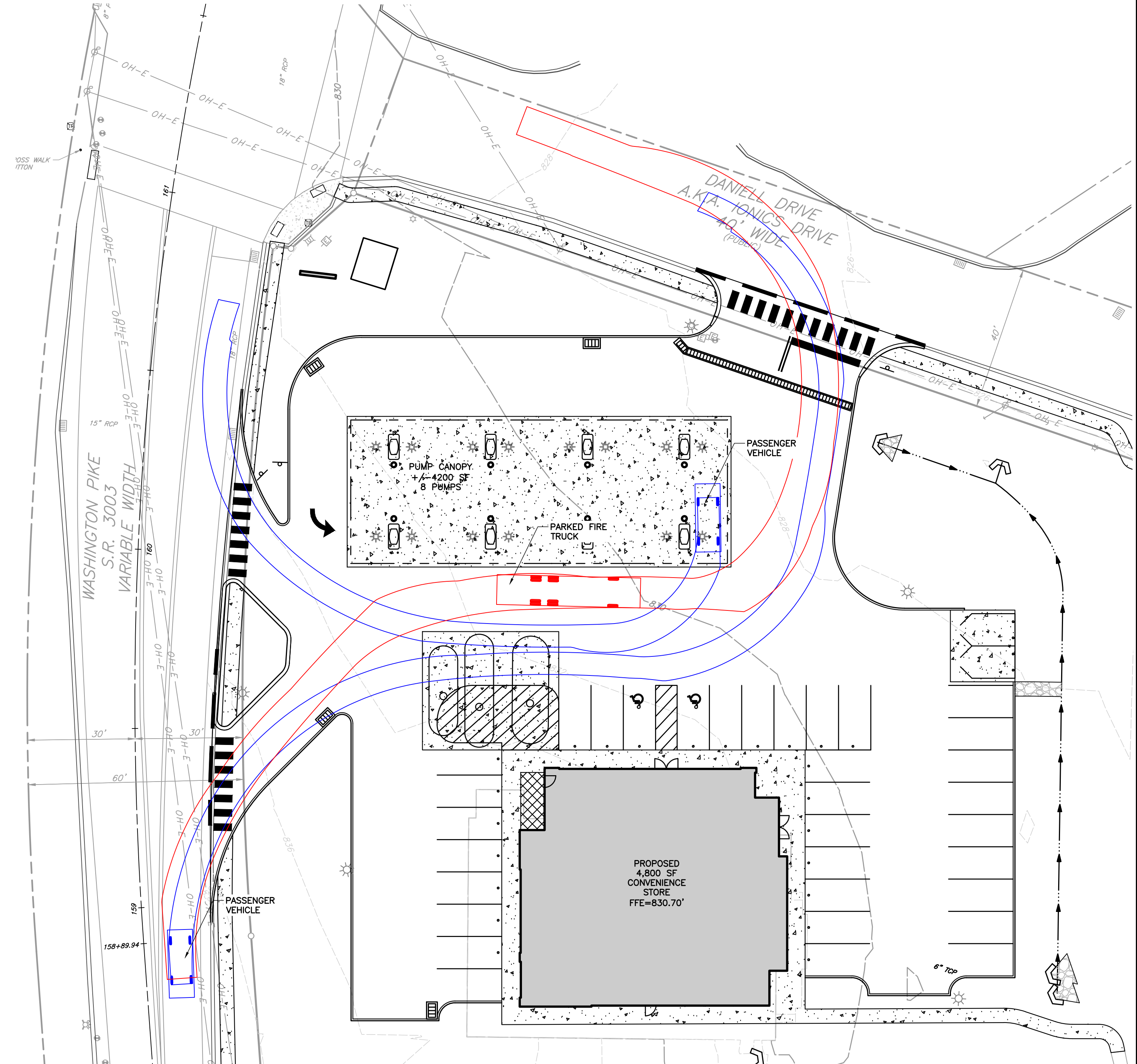
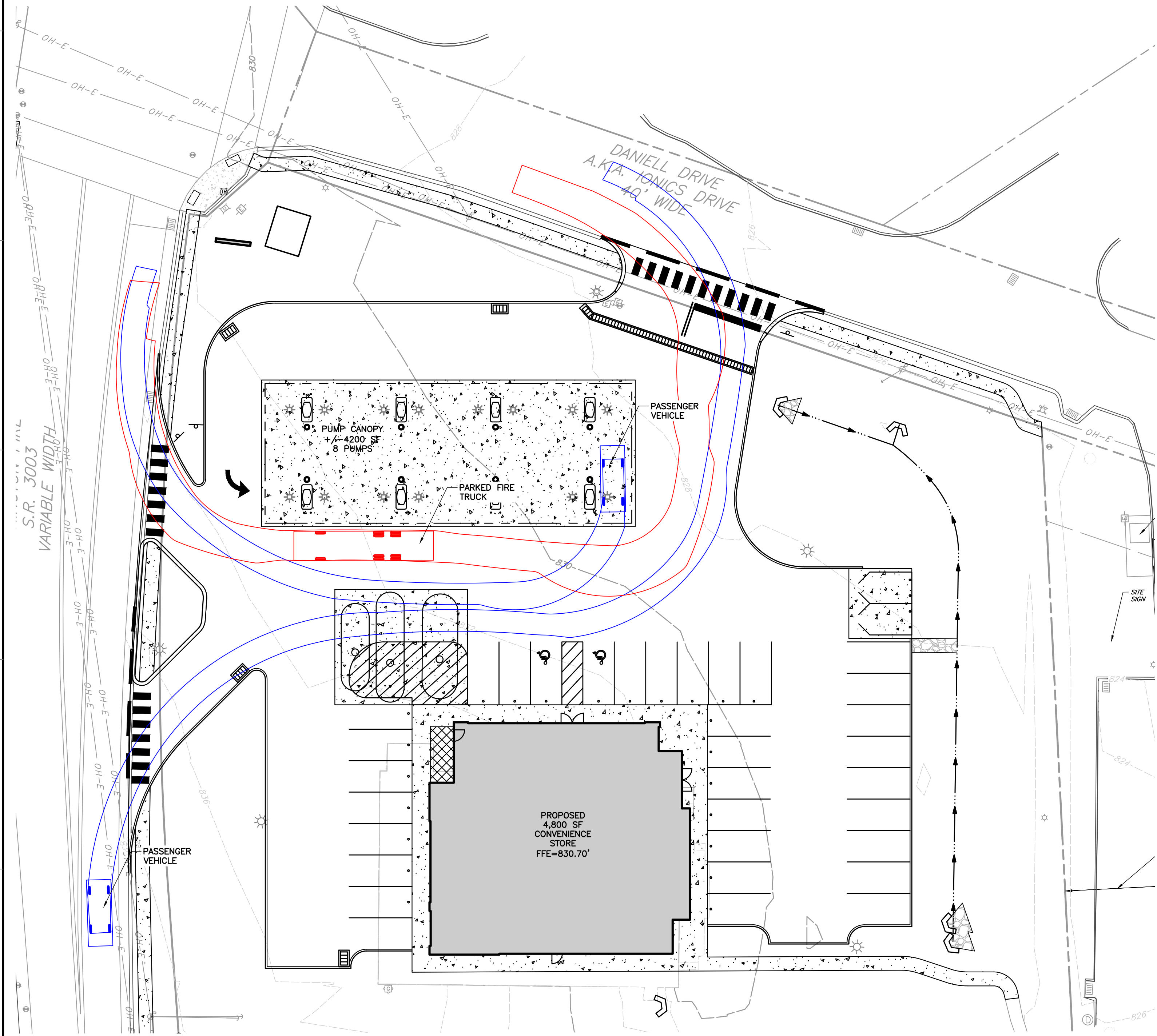


NORTH



E-ONE HP100 Aerial
 Overall Length 840
 Overall Width 8.333ft
 Overall Body Height 11.000ft
 Min Body Ground Clearance 1.393ft
 Track Width 8.333ft
 Lock-to-lock time 6.00s
 Max Wheel Angle 45.00°

REFERENCE

- EXISTING CONTOURS DERIVED FROM A BARE-EARTH DIGITAL ELEVATION MODEL CONSTRUCTED FROM PAMAP LIDAR (LIGHT DETECTION AND RANGING) ELEVATION POINTS. TOPOGRAPHIC CONTOURS MAPPED AT AN INTERVAL OF 2 FEET; DEVELOPED BY PAMAP PROGRAM, PA DEPARTMENT OF CONSERVATION AND NATURAL RESOURCES, BUREAU OF TOPOGRAPHIC AND GEOLOGIC SURVEY; DATED 2010.
- SURVEY INFORMATION COMPLETED BY CIVIL & ENVIRONMENTAL CONSULTANTS, INC (CEC) DATED SEPTEMBER 2019. VERTICAL DATUM IS BASED UPON NAVD83, AS DETERMINED BY CEC USING SURVEY GRADE GPS MEASUREMENTS AND OPUS POST-PROCESSING.

ONE CALL SERIAL NO.: 20192403397-000

CALL BEFORE YOU DIG!
 PENNSYLVANIA LAW REQUIRES
 3 WORKING DAYS NOTICE FOR
 CONSTRUCTION PHASE AND 10 WORKING
 DAYS IN DESIGN STAGE-STOP CALL
 PENNSYLVANIA ONE CALL SYSTEM, INC.
 1-800-242-1776

PENNSYLVANIA ACT 287 (1974) AS AMENDED BY ACT 50 (2017), REQUIRES NO LESS THAN 3 WORKING DAYS NOTICE NOR MORE THAN 10 WORKING DAYS NOTICE FROM EXCAVATORS WHO ARE ABOUT TO DIG, DRILL, BLAST, AUGER, BORE, GRADE, TRENCH, OR DEMOLISH WHEN IN THE CONSTRUCTION PHASE. FOR LOCATION REQUESTS IN THE STATE OF PENNSYLVANIA, CALL TOLL FREE 1-800-242-1776. UNDERGROUND UTILITIES HAVE BEEN PLOTTED FROM AVAILABLE INFORMATION AND THE LOCATION MUST BE CONSIDERED APPROXIMATE. OTHER UNDERGROUND UTILITIES MAY EXIST WHICH ARE NOT SHOWN. IT WILL BE THE CONTRACTOR'S RESPONSIBILITY TO ASCERTAIN ALL PHYSICAL LOCATIONS OF UTILITY LINES PRIOR TO THE TIME OF CONSTRUCTION, IN NO WAY SHALL THE CONTRACTOR HOLD THE SURVEYOR RESPONSIBLE FOR ANY UTILITY LOCATION SHOWN ON THIS PLAN.



NO.	DATE	DESCRIPTION

Civil & Environmental Consultants, Inc.
 333 Baldwin Road · Pittsburgh, PA 15205
 412-429-2324 · 800-365-2324
 www.cecinc.com

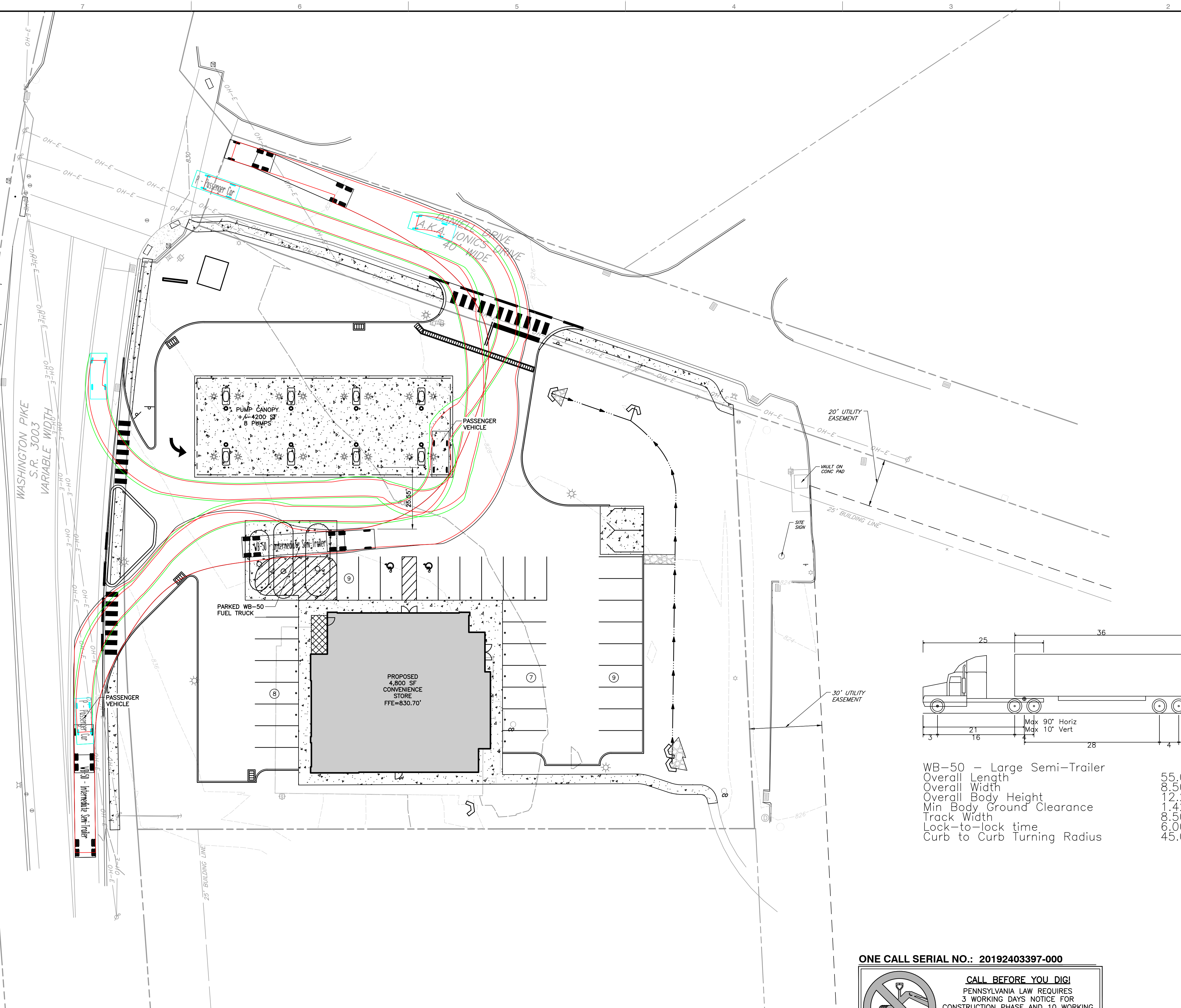
DOROTHY HOLDINGS LLC
SOUTH FAYETTE AMERICAN NATURAL
SOUTH FAYETTE TOWNSHIP
ALLEGHENY COUNTY, PENNSYLVANIA

FIRE TRUCK TURN EXHIBIT

DRAWING NO. **SP-04**

DATE: NOVEMBER 2019 | DRAWN BY: DWT
 DWG SCALE: AS SHOWN | CHECKED BY: ARG
 PROJECT NO: 192-386
 APPROVED BY: AMB

A:\192\192-386\192-386-001\192-386-001-SHA.dwg (SP-04) 15/02/21/2020 - 09:00am - LP 6/4/2020 11:47 AM



- REFERENCE**
- EXISTING CONTOURS DERIVED FROM A BARE-EARTH DIGITAL ELEVATION MODEL CONSTRUCTED FROM PAMAP LIDAR (LIGHT DETECTION AND RANGING) ELEVATION POINTS. TOPOGRAPHIC CONTOURS MAPPED AT AN INTERVAL OF 2 FEET; DEVELOPED BY PAMAP PROGRAM, PA DEPARTMENT OF CONSERVATION AND NATURAL RESOURCES, BUREAU OF TOPOGRAPHIC AND GEOLOGIC SURVEY; DATED 2010.
 - SURVEY INFORMATION COMPLETED BY CIVIL & ENVIRONMENTAL CONSULTANTS, INC (CEC) DATED SEPTEMBER 2019. VERTICAL DATUM IS BASED UPON NAVD88, AS DETERMINED BY CEC USING SURVEY GRADE GPS MEASUREMENTS AND OPUS POST-PROCESSING.

ONE CALL SERIAL NO.: 20192403397-000

CALL BEFORE YOU DIG!
 PENNSYLVANIA LAW REQUIRES
 3 WORKING DAYS NOTICE FOR
 CONSTRUCTION PHASE AND 10 WORKING
 DAYS IN DESIGN STAGE-STOP CALL
 PENNSYLVANIA ONE CALL SYSTEM, INC.
 1-800-242-1776

PENNSYLVANIA ACT 287 (1974) AS AMENDED BY ACT 50 (2017), REQUIRES NO LESS THAN 3 WORKING DAYS NOTICE NOR MORE THAN 10 WORKING DAYS NOTICE FROM EXCAVATORS WHO ARE ABOUT TO DIG, DRILL, BLAST, AUGER, BORE, GRADE, TRENCH, OR DEMOLISH WHEN IN THE CONSTRUCTION PHASE. FOR LOCATION REQUESTS IN THE STATE OF PENNSYLVANIA, CALL TOLL FREE 1-800-242-1776. UNDERGROUND UTILITIES HAVE BEEN PLOTTED FROM AVAILABLE INFORMATION AND THE LOCATION MUST BE CONSIDERED APPROXIMATE. OTHER UNDERGROUND UTILITIES MAY EXIST WHICH ARE NOT SHOWN. IT WILL BE THE CONTRACTOR'S RESPONSIBILITY TO ASCERTAIN ALL PHYSICAL LOCATIONS OF UTILITY LINES PRIOR TO THE TIME OF CONSTRUCTION. IN NO WAY SHALL THE CONTRACTOR HOLD THE SURVEYOR RESPONSIBLE FOR ANY UTILITY LOCATION SHOWN ON THIS PLAN.



NO.	DATE	DESCRIPTION

Civil & Environmental Consultants, Inc.
 333 Baldwin Road · Pittsburgh, PA 15205
 412-429-2324 · 800-365-2324
 www.cecinc.com

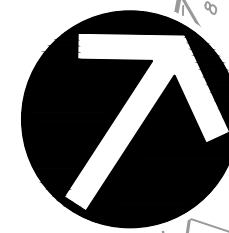
**DOROTHY HOLDINGS LLC
 SOUTH FAYETTE AMERICAN NATURAL
 SOUTH FAYETTE TOWNSHIP
 ALLEGHENY COUNTY, PENNSYLVANIA**

WB-50 TRUCK TURN EXHIBIT

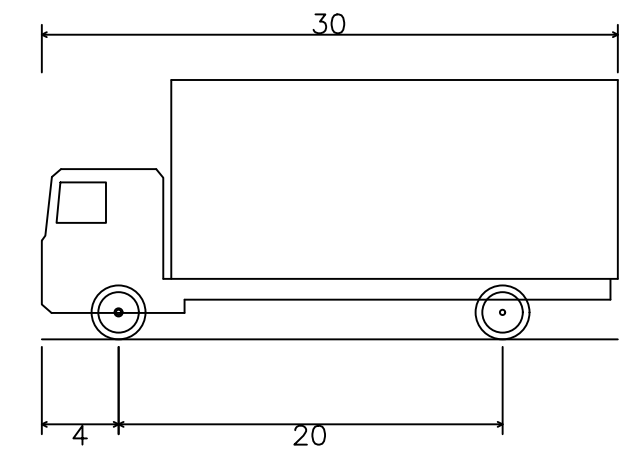
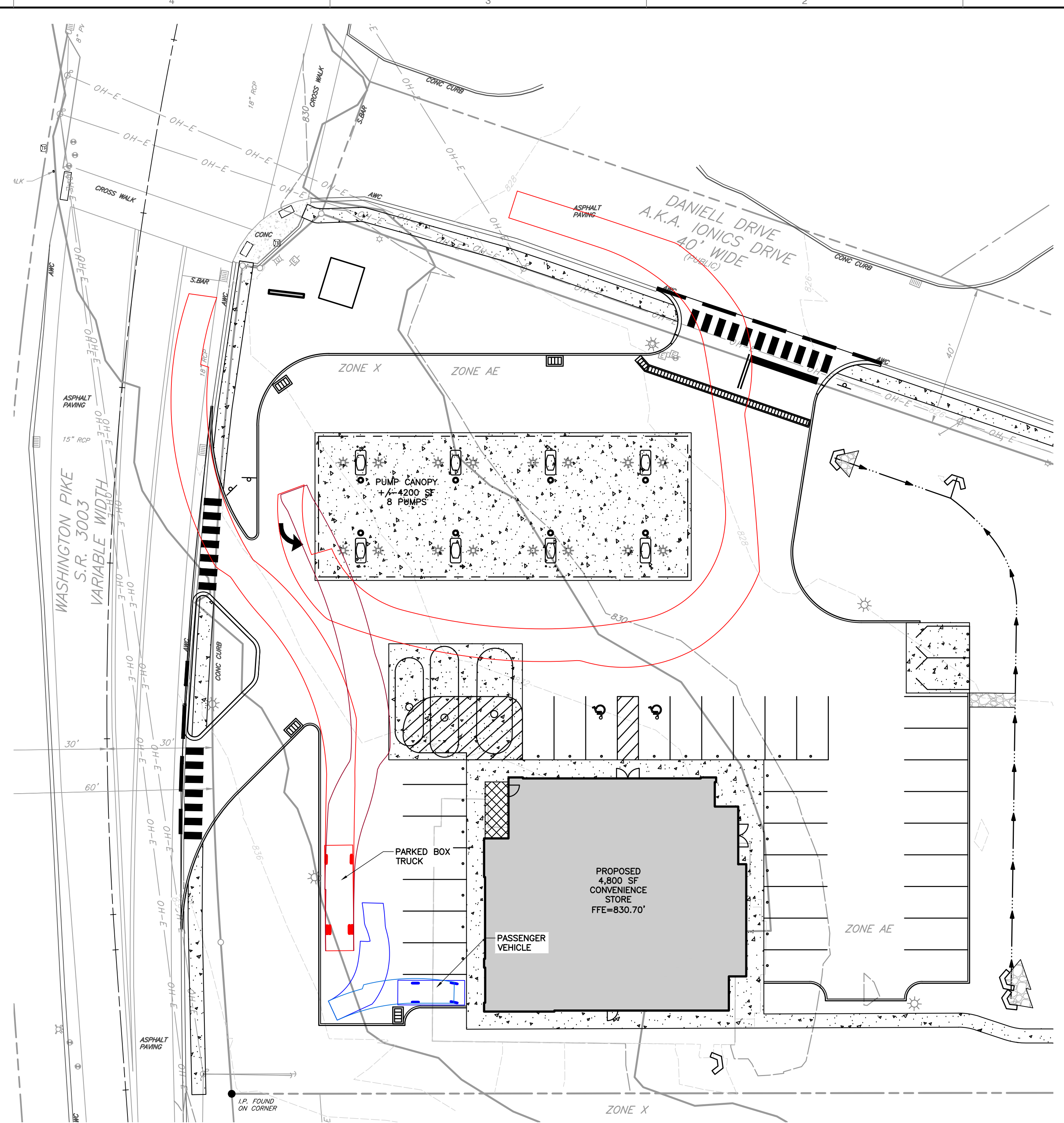
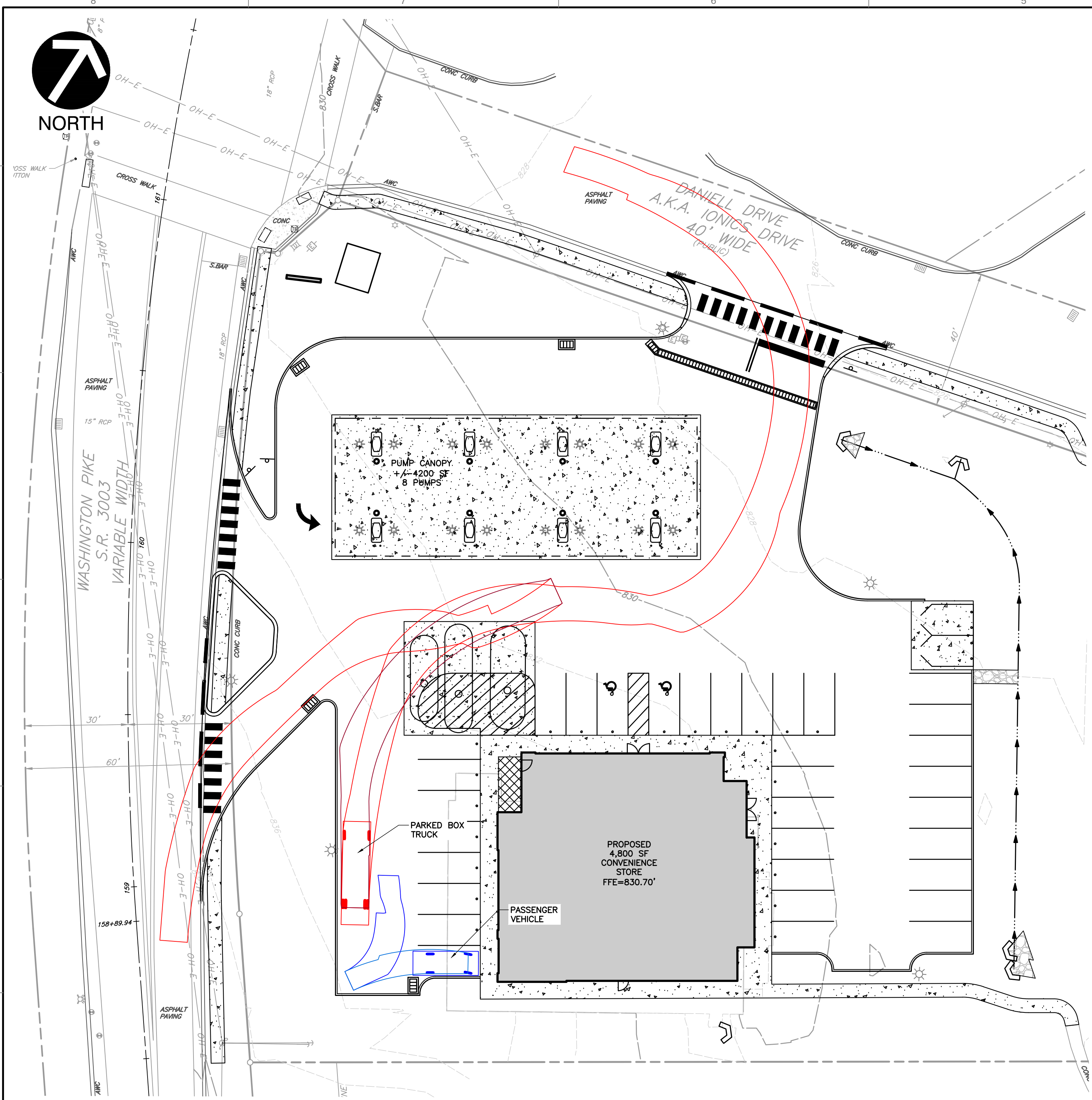
DRAWING NO.: **SP-05**

DATE:	NOVEMBER 2019	DRAWN BY:	DWT
DWG SCALE:	AS SHOWN	CHECKED BY:	ARG
PROJECT NO.:	192-386	APPROVED BY:	AMB

A:\2019\192-386\192-386-001-SP5.dwg - 6/4/2020 11:48 AM



NORTH



SU-30 - Single Unit Truck
 Overall Length 30.000ft
 Overall Width 8.000ft
 Overall Body Height 13.500ft
 Min Body Ground Clearance 1.367ft
 Track Width 8.000ft
 Lock-to-lock time 6.00s
 Max Steering Angle (Virtual) 61.80°

- REFERENCE**
- EXISTING CONTOURS DERIVED FROM A BARE-EARTH DIGITAL ELEVATION MODEL CONSTRUCTED FROM PAMAP LIDAR (LIGHT DETECTION AND RANGING) ELEVATION POINTS. TOPOGRAPHIC CONTOURS MAPPED AT AN INTERVAL OF 2 FEET; DEVELOPED BY PAMAP PROGRAM, PA DEPARTMENT OF CONSERVATION AND NATURAL RESOURCES, BUREAU OF TOPOGRAPHIC AND GEOLOGIC SURVEY; DATED 2010.
 - SURVEY INFORMATION COMPLETED BY CIVIL & ENVIRONMENTAL CONSULTANTS, INC (CEC) DATED SEPTEMBER 2019. VERTICAL DATUM IS BASED UPON NAVD83, AS DETERMINED BY CEC USING SURVEY GRADE GPS MEASUREMENTS AND OPUS POST-PROCESSING.

ONE CALL SERIAL NO.: 20192403397-000



CALL BEFORE YOU DIG!
 PENNSYLVANIA LAW REQUIRES
 3 WORKING DAYS NOTICE FOR
 CONSTRUCTION PHASE AND 10 WORKING
 DAYS IN DESIGN STAGE-STOP CALL
 PENNSYLVANIA ONE CALL SYSTEM, INC.
 1-800-242-1776

PENNSYLVANIA ACT 287 (1974) AS AMENDED BY ACT 50 (2017), REQUIRES NO LESS THAN 3 WORKING DAYS NOTICE NOR MORE THAN 10 WORKING DAYS NOTICE FROM EXCAVATORS WHO ARE ABOUT TO DIG, DRILL, BLAST, AUGER, BORE, GRADE, TRENCH, OR DEMOLISH WHEN IN THE CONSTRUCTION PHASE. FOR LOCATION REQUESTS IN THE STATE OF PENNSYLVANIA, CALL TOLL FREE 1-800-242-1776. UNDERGROUND UTILITIES HAVE BEEN PLOTTED FROM AVAILABLE INFORMATION AND THE LOCATION MUST BE CONSIDERED APPROXIMATE. OTHER UNDERGROUND UTILITIES MAY EXIST WHICH ARE NOT SHOWN. IT WILL BE THE CONTRACTOR'S RESPONSIBILITY TO ASCERTAIN ALL PHYSICAL LOCATIONS OF UTILITY LINES PRIOR TO THE TIME OF CONSTRUCTION, IN NO WAY SHALL THE CONTRACTOR HOLD THE SURVEYOR RESPONSIBLE FOR ANY UTILITY LOCATION SHOWN ON THIS PLAN.



NO.	DATE	DESCRIPTION

Civil & Environmental Consultants, Inc.
 333 Baldwin Road · Pittsburgh, PA 15205
 412-429-2324 · 800-365-2324
 www.cecinc.com

**DOROTHY HOLDINGS LLC
 SOUTH FAYETTE AMERICAN NATURAL
 SOUTH FAYETTE TOWNSHIP
 ALLEGHENY COUNTY, PENNSYLVANIA**

**FIXED UNIT BOX TRUCK
 DELIVERY TURN EXHIBIT**

DATE: NOVEMBER 2019 | DRAWN BY: DWT
 DWG SCALE: AS SHOWN | CHECKED BY: ARG
 PROJECT NO: 192-386
 APPROVED BY: AMB

DRAWING NO.: **SP-07**

A:\2019\192-386\192-386-001-SP1.dwg - 07/15/2020 11:48 AM - LPL 6/4/2020 11:48 AM