

17576 HEMLOCK AVENUE
LAKEVILLE, MN 55044
763.639.7766

SteveS@lmasigns.com
lmasigns.com

APPROVAL OF THIS DRAWING
HEREBY GIVES PERMISSION
TO LANDMARK ARCHITECTURAL
SIGNS TO BEGIN PRODUCTION
OF THE SIGN(S) WITHIN THIS
DOCUMENT. THE RECIPIENT
AGREES THAT ALL THE COLORS,
SPECIFICATIONS AND ELEVATIONS
LISTED IN THIS DRAWING ARE
CORRECT AND APPROVED. CHANGES
MADE TO THIS DRAWING AFTER
PRODUCTION HAS BEGUN WILL
RESULT IN ADDITIONAL CHARGES.

THE PIAZZA
MILLERS RUN ROAD
SOUTH FAYETTE TOWNSHIP
ALLEGHENY CO, PA

PROJECT TYPE:
POLE SIGN
WITH MAIN ID CHANNEL
LETTERS AND TENANT PANEL
CABINET

CUSTOMER APPROVAL:
NAME: _____

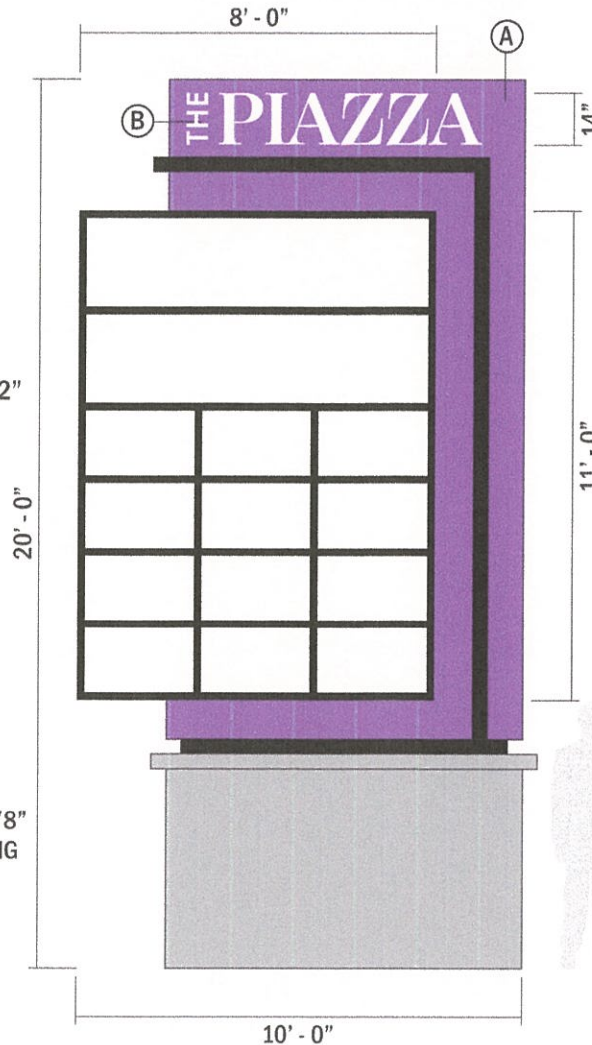
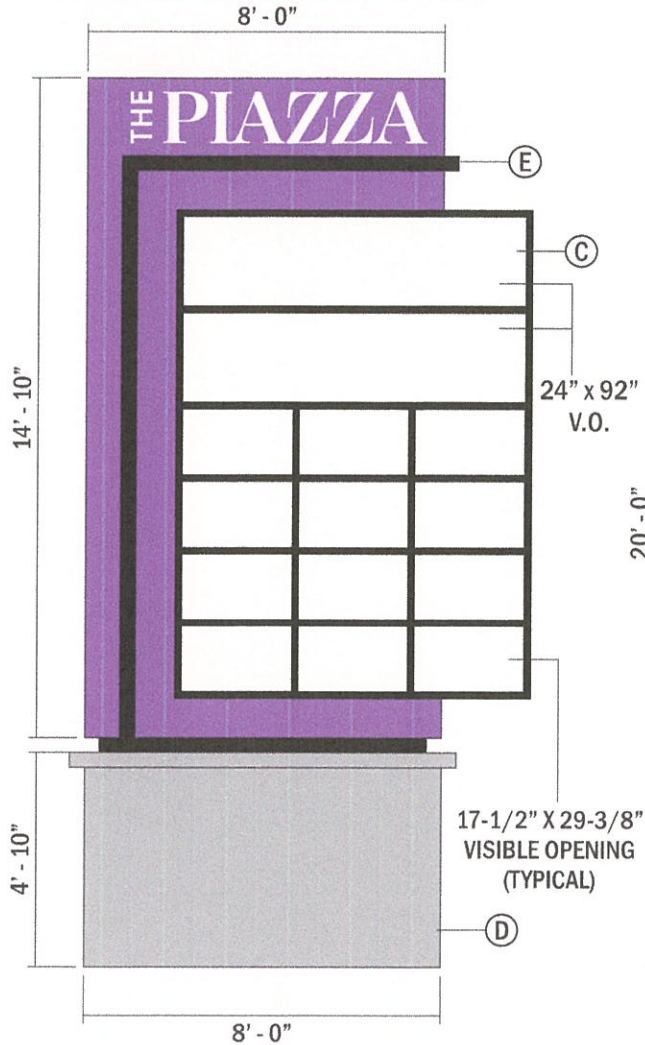
DATE: _____

PROJECT CONTACT: STEVE SPRY

REVISION 1: 03.23.22 MW
REVISION 2:
REVISION 3:
REVISION 4:
REVISION 5:

SALES: SS
DESIGN: MW
DATE: 03.09.22
DWG: THE PIAZZA

TENANT PANEL CONFIGURATION OPTION ONE



- (A) 18" DEEP X 96" WIDE X 178" TALL ALUMINUM STRUCTURE W/ TEXTURED PAINT FINISH. COLOR TBD
- (B) 14" X 74" COPY AS SUPPLIED BY CLIENT. CANNOT BE ILLUMINATED.
- (C) 24" DEEP X 96" WIDE X 132" TALL ALUMINUM CABINET WITH (14) TENANT PANELS PAINTED SATIN BLACK
- (D) 24" DEEP X 96" WIDE X 54" TALL ALUMINUM STRUCTURE W/ TEXTURED PAINT FINISH. 4" TALL X 32" DEEP X 104" WIDE ALUMINUM CAP WITH TEXTURED PAINT FINISH
- (E) 4" DEEP X 90-1/2" WIDE X 157" TALL ALUMINUM TUBE DETAIL PAINTED SATIN BLACK

THE PIAZZA
CHANNEL LETTERS
7.24 SQ FT
TENANT PANEL
CABINET
88 SQ FT
TOTAL
95.24 SQ FT
(100 SQ FT MAXIMUM ALLOWANCE)



1 PROPOSED: POLE SIGN WITH MAIN ID CHANNEL LETTERS AND TENANT PANEL CABINET
1 SCALE: 3/8" = 1' - 0"

17576 HEMLOCK AVENUE
LAKEVILLE, MN 55044
763.639.7766

SteveS@masigns.com
masigns.com

APPROVAL OF THIS DRAWING
HEREBY GIVES PERMISSION
TO LANDMARK ARCHITECTURAL
SIGNS TO BEGIN PRODUCTION
OF THE SIGN(S) WITHIN THIS
DOCUMENT. THE RECIPIENT
AGREES THAT ALL THE COLORS,
SPECIFICATIONS AND ELEVATIONS
LISTED IN THIS DRAWING ARE
CORRECT AND APPROVED. CHANGES
MADE TO THIS DRAWING AFTER
PRODUCTION HAS BEGUN WILL
RESULT IN ADDITIONAL CHARGES.

THE PIAZZA
MILLERS RUN ROAD
SOUTH FAYETTE TOWNSHIP
ALLEGHENY CO, PA

PROJECT TYPE:

POLE SIGN
WITH MAIN ID CHANNEL
LETTERS AND TENANT PANEL
CABINET

CUSTOMER APPROVAL:

NAME: _____

DATE: _____

PROJECT CONTACT: STEVE SPRY

REVISION 1: 03.23.22 MW

REVISION 2: _____

REVISION 3: _____

REVISION 4: _____

REVISION 5: _____

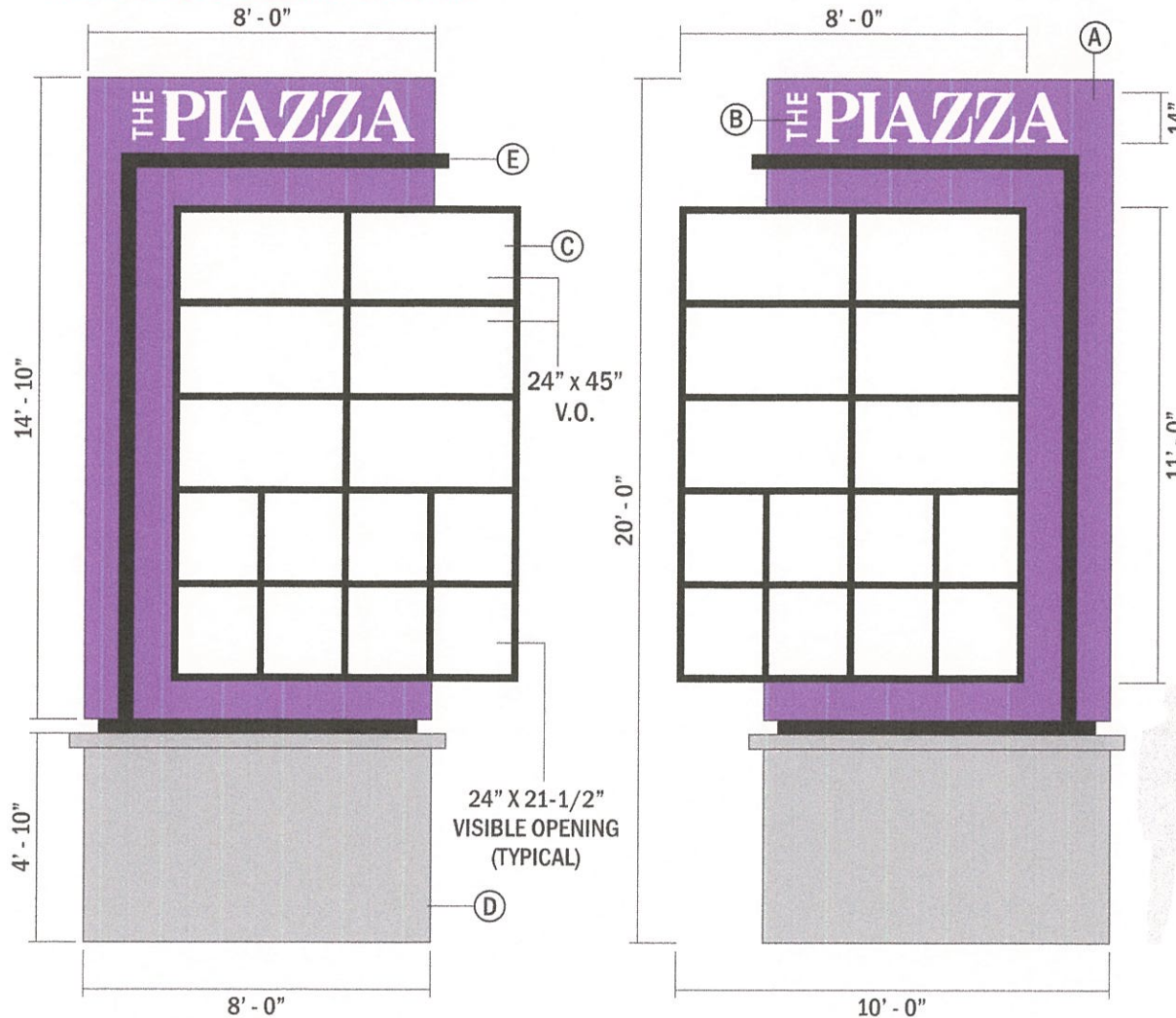
SALES: SS

DESIGN: MW

DATE: 03.09.22

DWG: THE PIAZZA

TENANT PANEL CONFIGURATION OPTION TWO



A 18" DEEP X 96" WIDE
X 178" TALL ALUMINUM
STRUCTURE W/ TEXTURED
PAINT FINISH. COLOR TBD

B 14" X 78" COPY MODIFIED
BY LANDMARK CAN ONLY BE
ILLUMINATED AS ROUTED COPY
BACKED WITH ACRYLIC.

C 24" DEEP X 96" WIDE
X 132" TALL ALUMINUM
CABINET WITH (14) TENANT
PANELS PAINTED SATIN BLACK

D 24" DEEP X 96" WIDE
X 54" TALL ALUMINUM
STRUCTURE W/ TEXTURED PAINT
FINISH. 4" TALL X 32" DEEP
X 104" WIDE ALUMINUM CAP
WITH TEXTURED PAINT FINISH

E 4" DEEP X 90-1/2" WIDE
X 157" TALL ALUMINUM
TUBE DETAIL PAINTED SATIN
BLACK

**THE PIAZZA
CHANNEL LETTERS
7.24 SQ FT
TENANT PANEL
CABINET
88 SQ FT
TOTAL
95.24 SQ FT
(100 SQ FT MAXIMUM ALLOWANCE)**



2 PROPOSED: POLE SIGN WITH MAIN ID CHANNEL LETTERS AND TENANT PANEL CABINET
1 SCALE: 3/8" = 1' - 0"

FOR QUOTING PURPOSES ONLY. DETAILS SUBJECT TO CHANGE VIA CONSULTATION WITH ENGINEER.

17576 HEMLOCK AVENUE
LAKEVILLE, MN 55044
763.639.7766

SteveS@lmasigns.com
lmasigns.com

APPROVAL OF THIS DRAWING
HEREBY GIVES PERMISSION TO LANDMARK ARCHITECTURAL SIGNS TO BEGIN PRODUCTION OF THE SIGN(S) WITHIN THIS DOCUMENT. THE RECIPIENT AGREES THAT ALL THE COLORS, SPECIFICATIONS AND ELEVATIONS LISTED IN THIS DRAWING ARE CORRECT AND APPROVED. CHANGES MADE TO THIS DRAWING AFTER PRODUCTION HAS BEGUN WILL RESULT IN ADDITIONAL CHARGES.

THE PIAZZA
MILLERS RUN ROAD
SOUTH FAYETTE TOWNSHIP
ALLEGHENY CO, PA

PROJECT TYPE:

POLE SIGN
WITH MAIN ID CHANNEL
LETTERS AND TENANT PANEL
CABINET

CUSTOMER APPROVAL:

NAME: _____

DATE: _____

PROJECT CONTACT: STEVE SPRY

REVISION 1: 03.23.22 MW

REVISION 2:

REVISION 3:

REVISION 4:

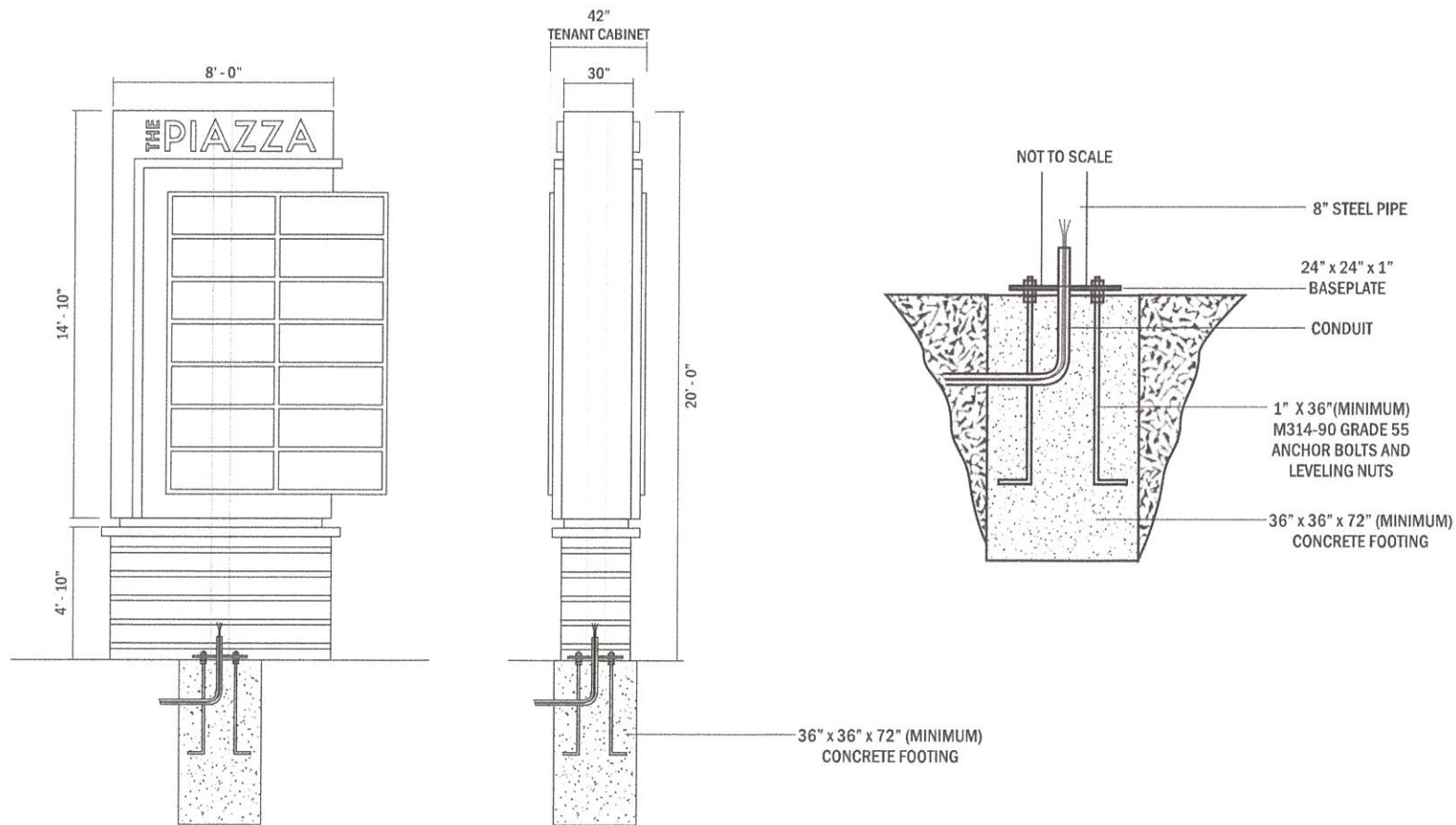
REVISION 5:

SALES: SS

DESIGN: MW

DATE: 03.09.22

DWG: THE PIAZZA



3 FOOTING DETAIL
1 SCALE: 1/4" = 1'-0"