

18 ABELE ROAD
BRIDGEVILLE, PENNSYLVANIA 15017



789 State St
Hamburg, PA 19526
www.thecrossroadsgroupllc.com
Fax: 484-660-3055
Phone: 484-660-3742

PROJECT INFORMATION:

VERIZON WIRELESS
CONCRETE PAD DESIGN
V1

PAGE:

D-1

PAGE NUMBER:

1 OF 9

DATE:

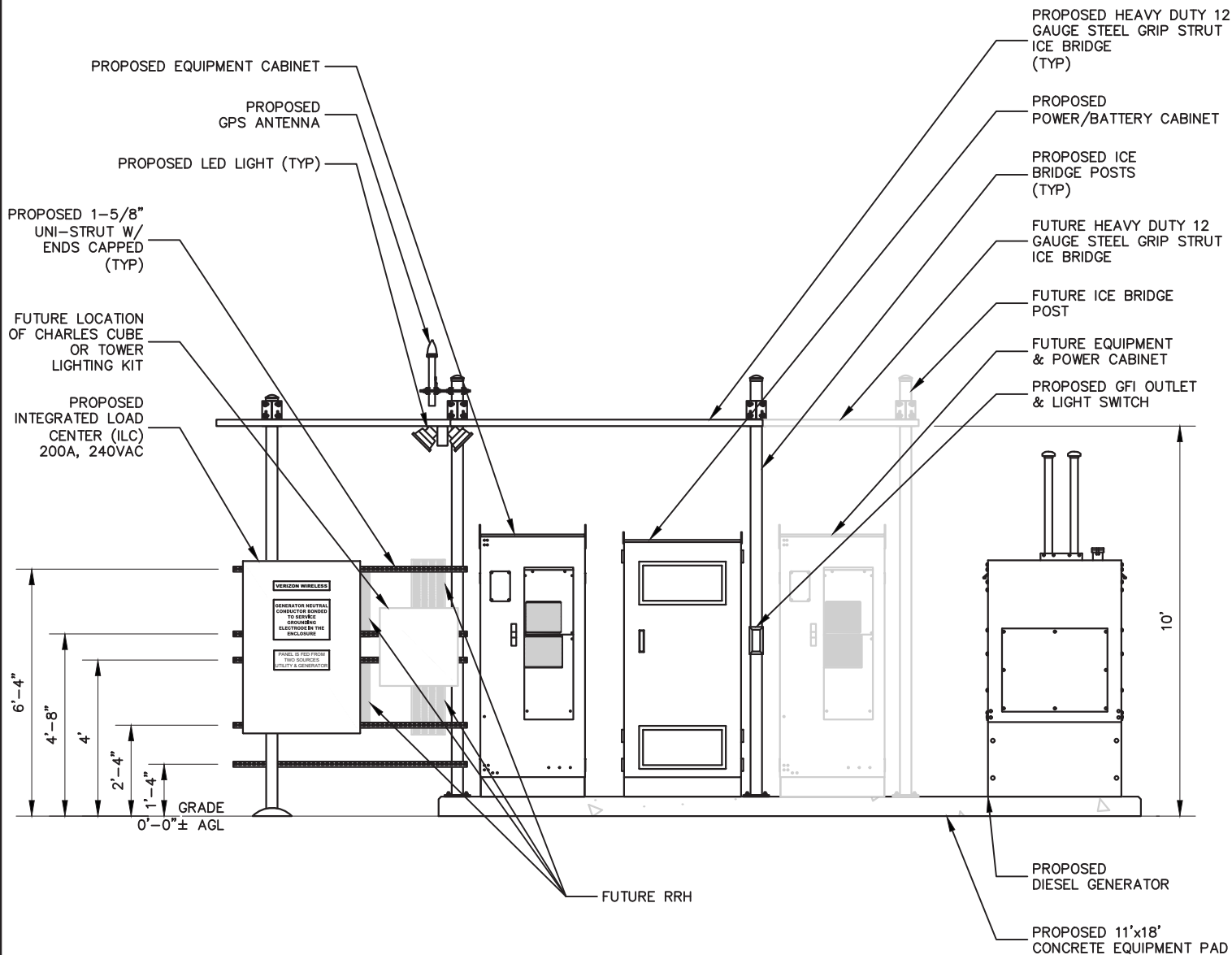
11/19/20
11/25/20
12/18/20
12/22/20
10/08/21
10/22/21

REVISION:

REVISED
REVISED
REVISED
REVISED
REVISED
REVISED

NAME:

BWT
BWT
BWT
BWT
BWT
BWT



1 VERIZON WIRELESS CONCRETE PAD DESIGN V1 – EAST VIEW

SCALE: 1/4"=1'-0"



18 ABELE ROAD
BRIDGEVILLE, PENNSYLVANIA 15017



759 State St
Hamburg, PA 19526
www.thecrossroadsgroupllc.com
Fax: 484-660-3055
Phone: 484-660-3742

PROJECT INFORMATION:

VERIZON WIRELESS
CONCRETE PAD DESIGN
V1

PAGE:

D-2

PAGE NUMBER:

2 OF 9

DATE:

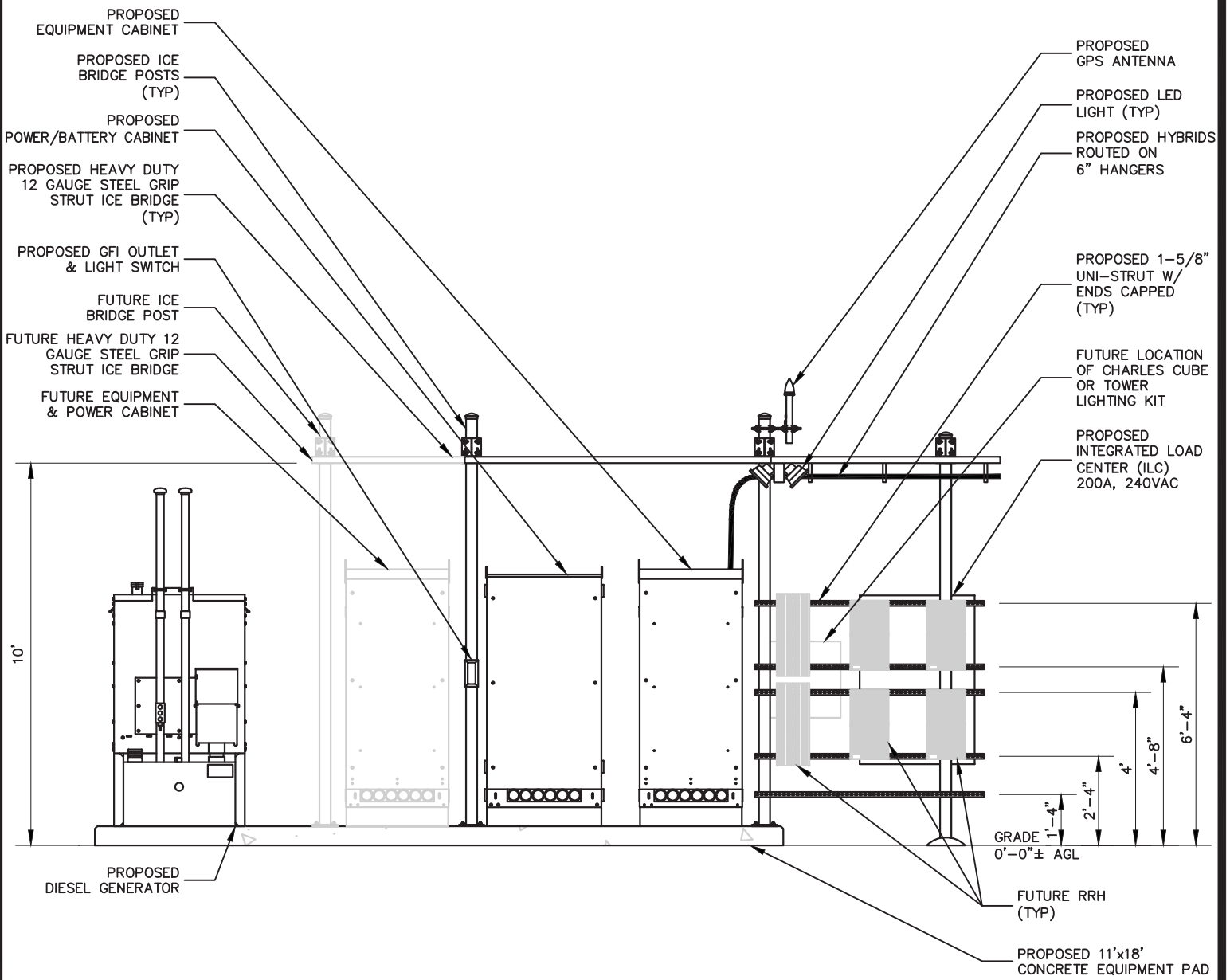
11/19/20
11/25/20
12/18/20
12/22/20
10/08/21
10/22/21

REVISION:

REVISED
REVISED
REVISED
REVISED
REVISED
REVISED

NAME:

BWT
BWT
BWT
BWT
BWT
BWT



1 VERIZON WIRELESS CONCRETE PAD DESIGN V1 - WEST VIEW

SCALE: 1/4"=1'-0"



18 ABELE ROAD
BRIDGEVILLE, PENNSYLVANIA 15017



PROJECT INFORMATION:

VERIZON WIRELESS
CONCRETE PAD DESIGN
V1

PAGE:

D-3

PAGE NUMBER:

3 OF 9

DATE:

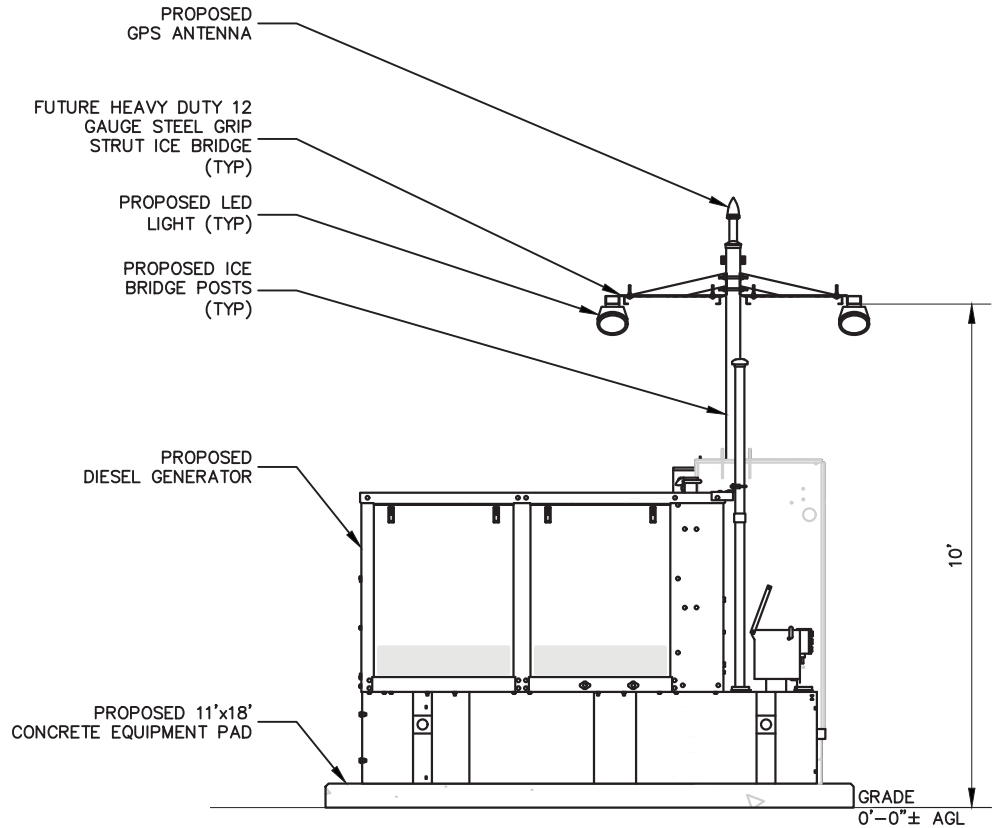
11/19/20
11/25/20
12/18/20
12/22/20
10/08/21
10/22/21

REVISION:

REVISED
REVISED
REVISED
REVISED
REVISED
REVISED

NAME:

BWT
BWT
BWT
BWT
BWT
BWT



1 VERIZON WIRELESS CONCRETE PAD DESIGN V1 - NORTH VIEW

SCALE: 1/4" = 1'-0"



18 ABELE ROAD
BRIDGEVILLE, PENNSYLVANIA 15017



The Crossroads GROUP, LLC
www.thecrossroadsgroupllc.com
789 State St
Hamburg, PA 19526
Fax: 484-660-3055
Phone: 484-660-3742

PROJECT INFORMATION:

VERIZON WIRELESS
CONCRETE PAD DESIGN
V1

PAGE:

D-4

PAGE NUMBER:

4 OF 9

DATE:

11/19/20

11/25/20

12/18/20

12/22/20

10/08/21

10/22/21

REVISION:

REVISED

REVISED

REVISED

REVISED

REVISED

REVISED

NAME:

BWT

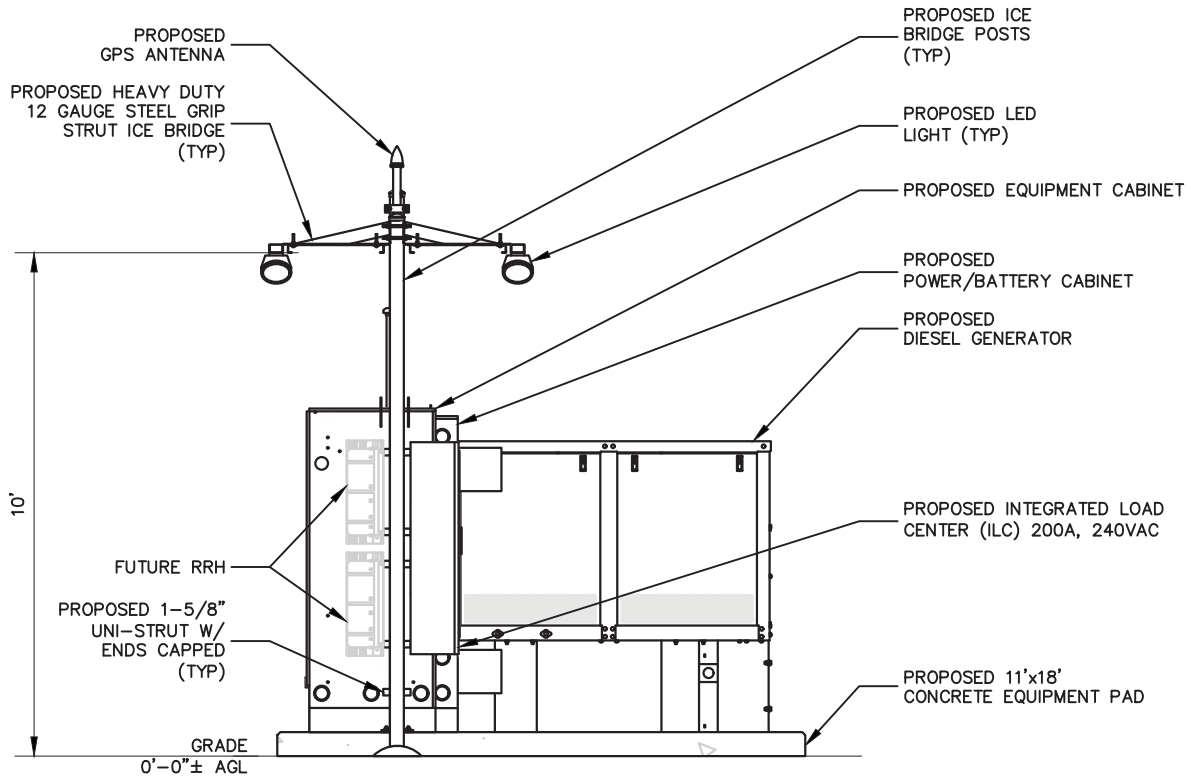
BWT

BWT

BWT

BWT

BWT



1 VERIZON WIRELESS CONCRETE PAD DESIGN V1 - SOUTH VIEW

SCALE: 1/4"=1'-0"



18 ABELE ROAD
BRIDGEVILLE, PENNSYLVANIA 15017



789 State St
Hamburg, PA 19526

www.thecrossroadsgroupllc.com
Fax: 484-660-3055
Phone: 484-660-3742

PROJECT INFORMATION:

VERIZON WIRELESS
CONCRETE PAD DESIGN
V1

PAGE:

D-5

PAGE NUMBER:

5 OF 9

DATE:

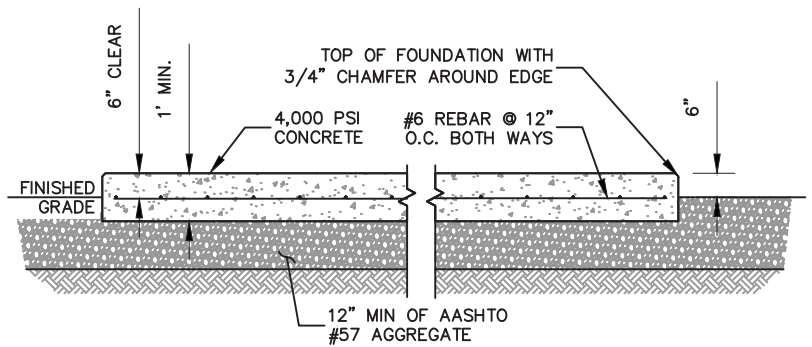
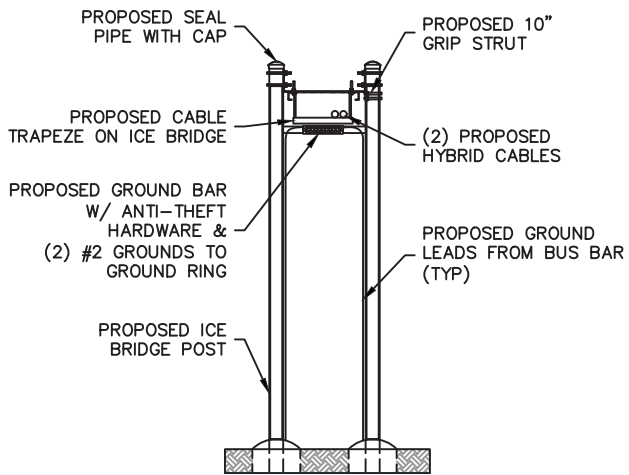
11/19/20
11/25/20
12/18/20
12/22/20
10/08/21
10/22/21

REVISION:

REVISED
REVISED
REVISED
REVISED
REVISED
REVISED

NAME:

BWT
BWT
BWT
BWT
BWT
BWT

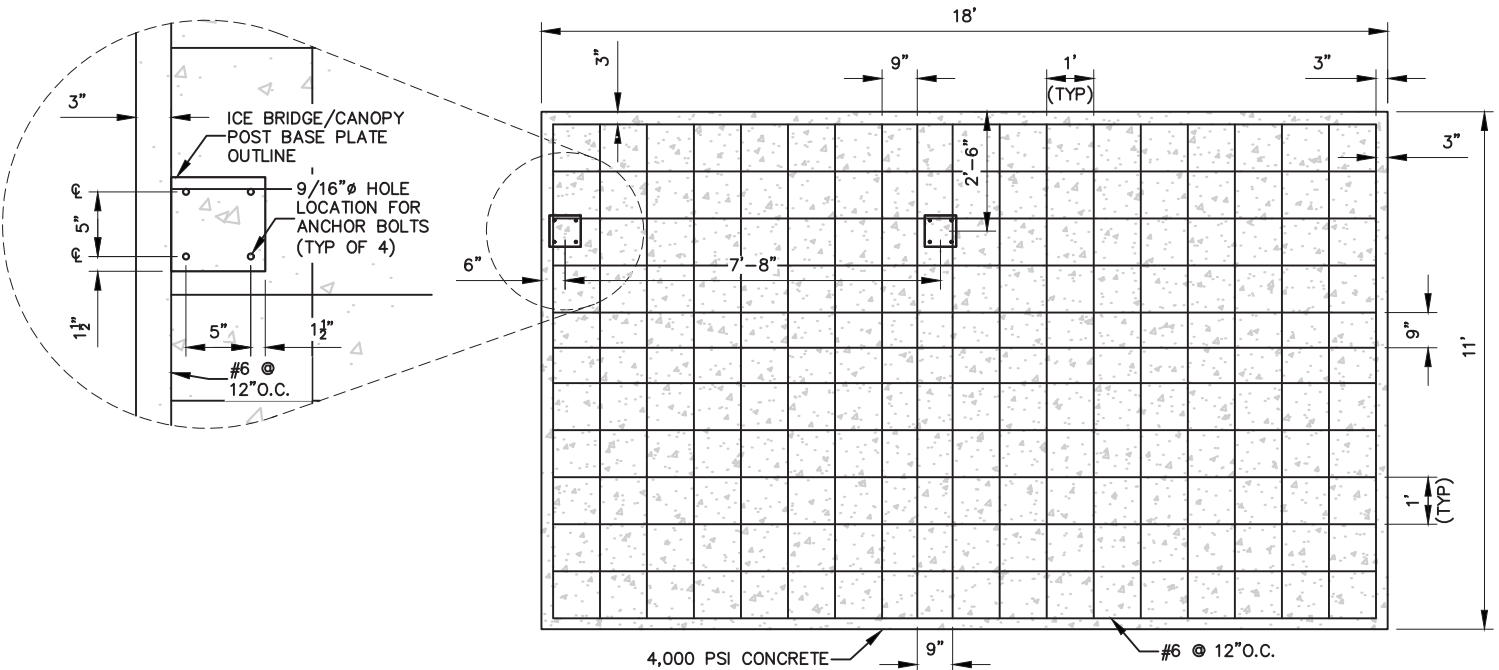


1 ICE BRIDGE SECTION

SCALE: N.T.S.

2 CONCRETE PAD ELEVATION

SCALE: 1/4"=1'-0"



3 VzW CONCRETE EQUIPMENT PAD DETAIL

SCALE: 1/4"=1'-0"



18 ABELE ROAD
BRIDGEVILLE, PENNSYLVANIA 15017



789 State St
Hamburg, PA 19526
www.thecrossroadsgroupllc.com
Fax: 484-660-3055
Phone: 484-660-3742

PROJECT INFORMATION:

VERIZON WIRELESS
CONCRETE PAD DESIGN
V1

PAGE:

D-6

PAGE NUMBER:

6 OF 9

DATE:

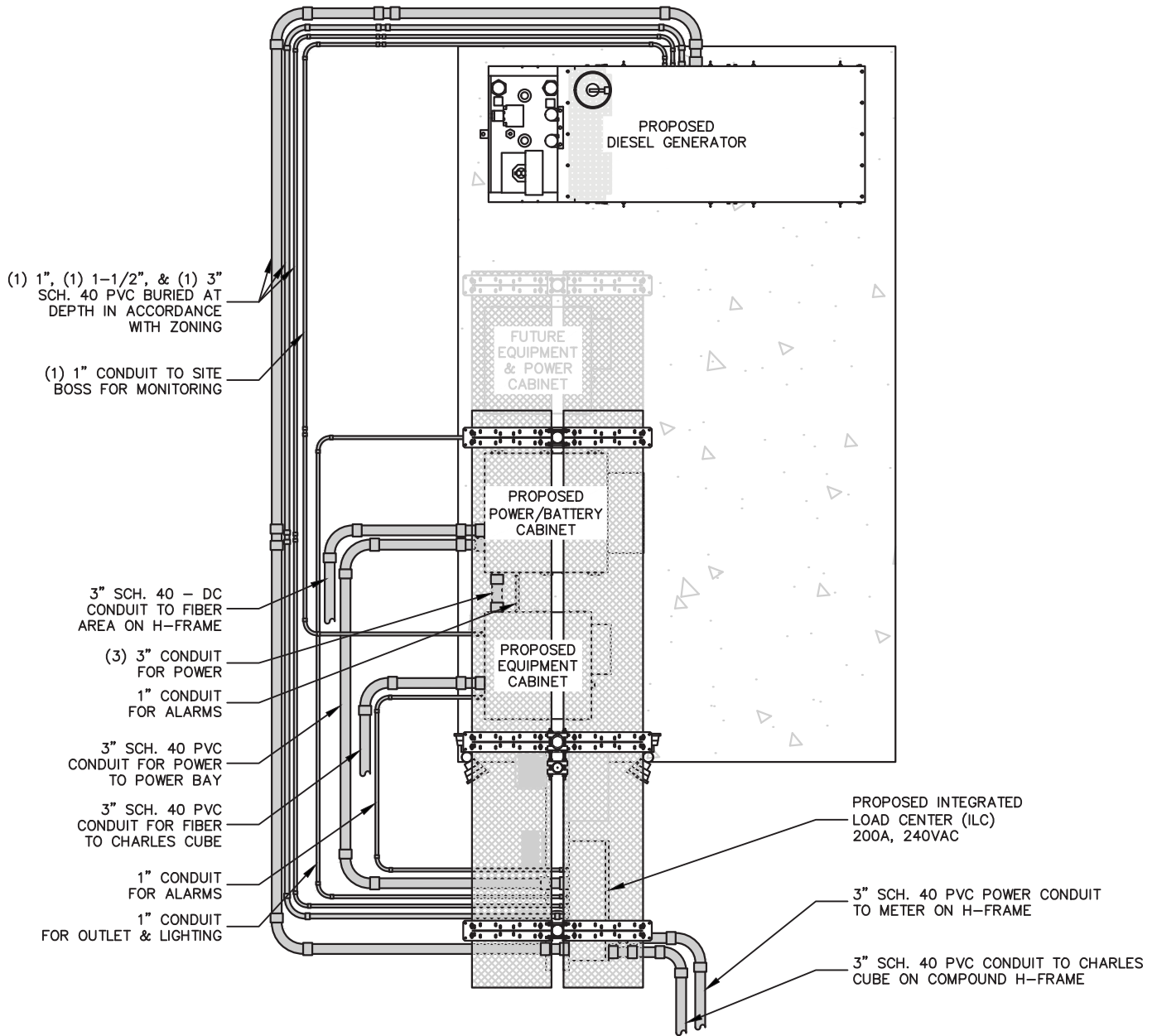
11/19/20
11/25/20
12/18/20
12/22/20
10/08/21
10/22/21

REVISION:

REVISED
REVISED
REVISED
REVISED
REVISED
REVISED

NAME:

BWT
BWT
BWT
BWT
BWT
BWT



NOTE:
CONDUIT RUNS MAY BE EXAGGERATED FOR CLARITY.



18 ABELE ROAD
BRIDGEVILLE, PENNSYLVANIA 15017

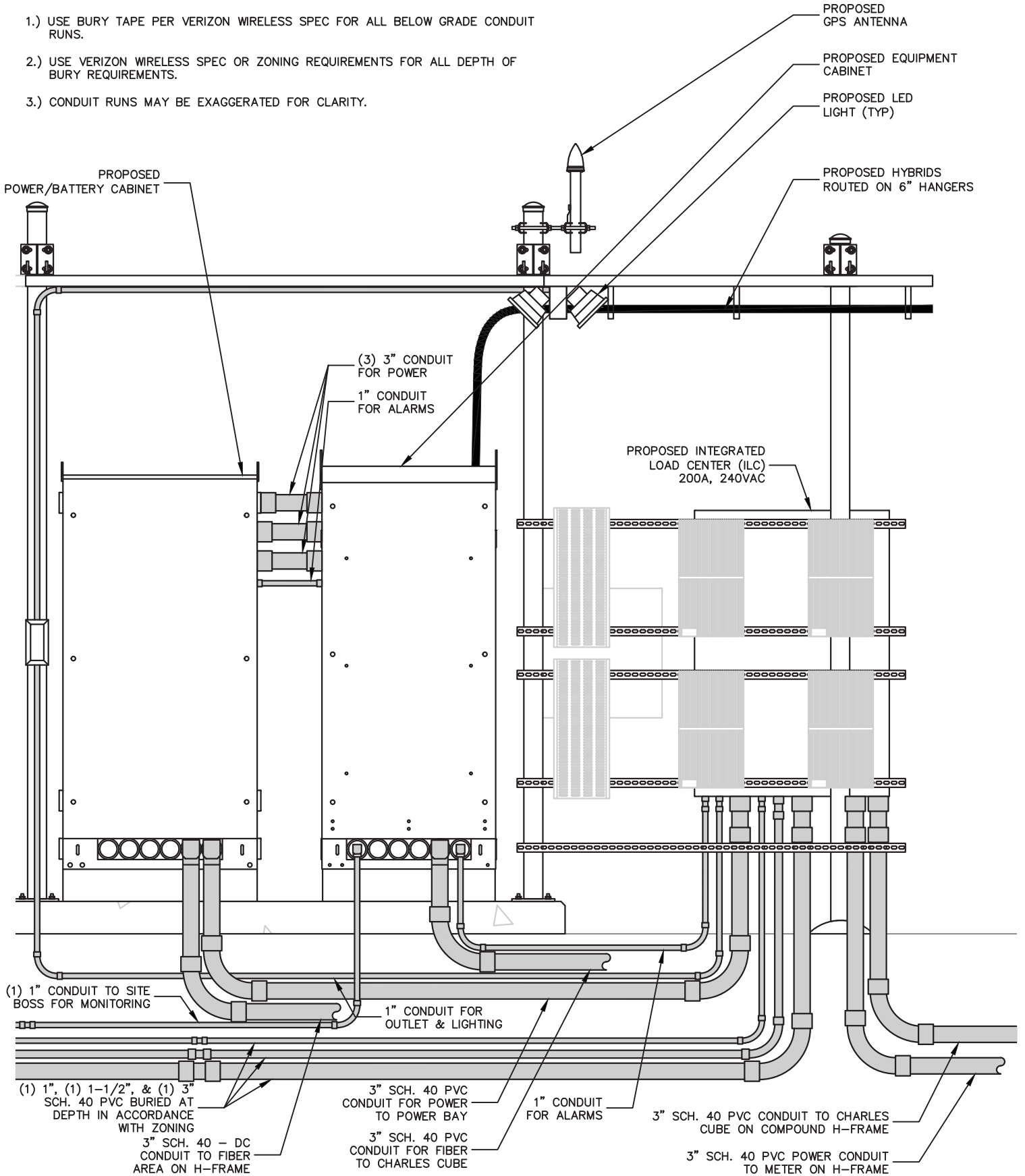


789 State St
Hamburg, PA 19526
www.thecrossroadsgroupllc.com
Fax: 484-660-3055
Phone: 484-660-3742

PROJECT INFORMATION:		DATE:	REVISION:	NAME:
VERIZON WIRELESS CONCRETE PAD DESIGN V1 PAGE: D-7 PAGE NUMBER: 7 OF 9		11/19/20	REVISED	BWT
		11/25/20	REVISED	BWT
		12/18/20	REVISED	BWT
		12/22/20	REVISED	BWT
		10/08/21	REVISED	BWT
		10/22/21	REVISED	BWT

NOTES:

- 1.) USE BURY TAPE PER VERIZON WIRELESS SPEC FOR ALL BELOW GRADE CONDUIT RUNS.
- 2.) USE VERIZON WIRELESS SPEC OR ZONING REQUIREMENTS FOR ALL DEPTH OF BURY REQUIREMENTS.
- 3.) CONDUIT RUNS MAY BE EXAGGERATED FOR CLARITY.



1 VERIZON WIRELESS CONCRETE PAD DESIGN V1 - H-FRAME DETAIL

SCALE: 1/2"=1'-0"

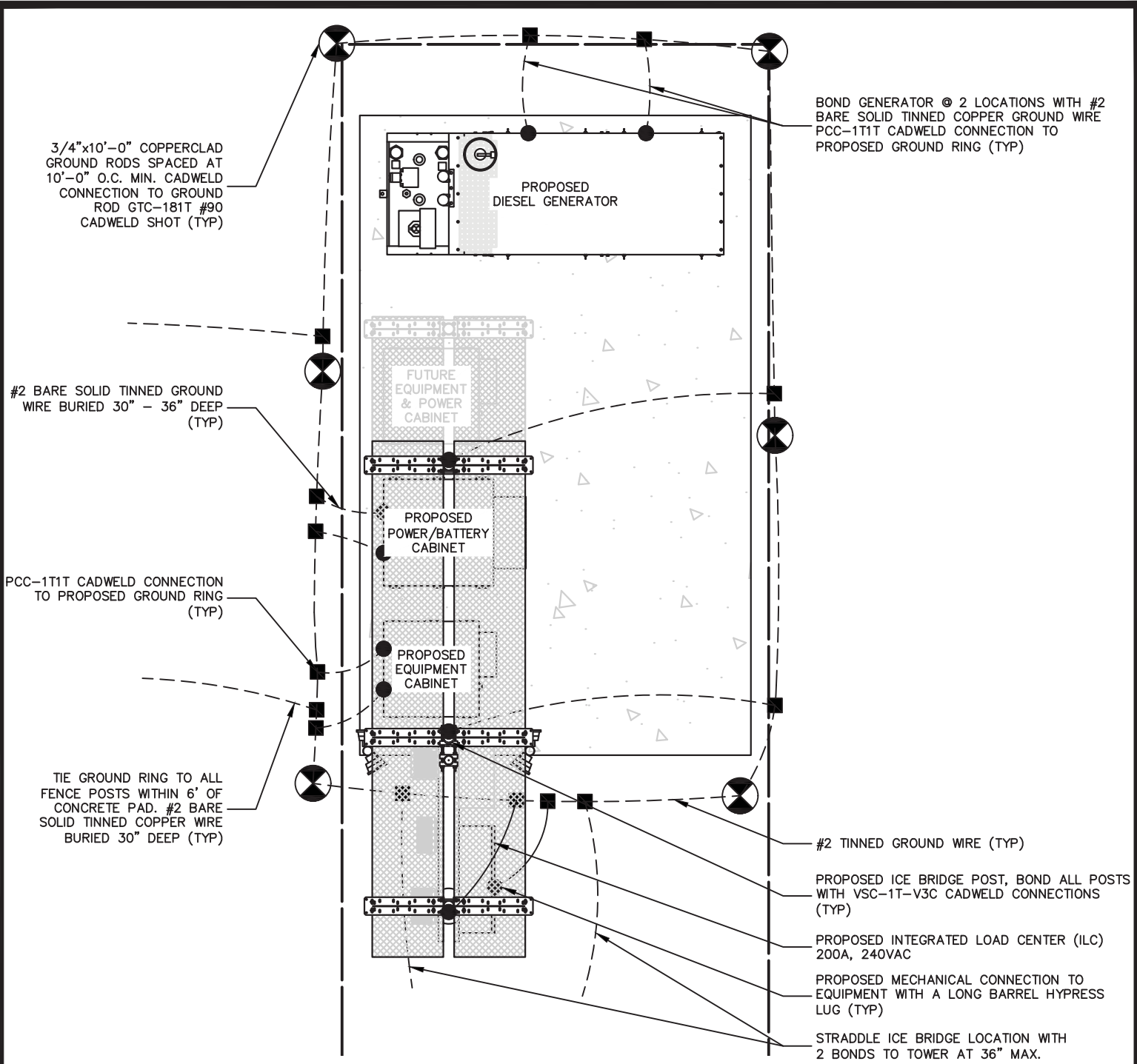


18 ABELE ROAD
BRIDGEVILLE, PENNSYLVANIA 15017



789 State St
Hamburg, PA 19526
www.thecrossroadsgroupllc.com
Fax: 484-660-3055
Phone: 484-660-3742

PROJECT INFORMATION:		DATE:	REVISION:	NAME:
VERIZON WIRELESS CONCRETE PAD DESIGN V1		11/19/20	REVISED	BWT
		11/25/20	REVISED	BWT
		12/18/20	REVISED	BWT
		12/22/20	REVISED	BWT
		10/08/21	REVISED	BWT
PAGE:	D-8	10/22/21	REVISED	BWT
PAGE NUMBER:	8 OF 9	10/22/21	REVISED	BWT



NOTES:

- 1.) IF GROUND RODS ARE REFUSED, UTILIZE THOMPSON LIGHTNING PROTECTION GROUNDING PLATE NO. 233M AS APPLICABLE.
- 2.) ALL CONNECTIONS TO EQUIPMENT SHALL BE HYPRESS LUGS WITH LONG BARREL.
- 3.) UTILIZE SANCHEM NO-OX-ID GROUNDING COMPOUND.
- 4.) ALL NON LIKE METALS NEED DRAGON TOOTH WASHERS AND BELLEVILLE WASHERS.
- 5.) ANTI-THEFT MOUNTING HARDWARE IS STILL REQUIRED FOR GROUNDING BARS.
- 6.) ALL ABOVE GRADE GROUND WIRES SHOULD BE SEALED WITH SEAL-TITE.
- 7.) GROUNDING MAY BE EXAGGERATED FOR CLARITY.



PROJECT INFORMATION:		DATE:	REVISION:	NAME:
VERIZON WIRELESS CONCRETE PAD DESIGN V1		11/19/20	REVISED	BWT
		11/25/20	REVISED	BWT
		12/18/20	REVISED	BWT
		12/22/20	REVISED	BWT
		10/08/21	REVISED	BWT
PAGE:	D-9	10/22/21	REVISED	BWT
PAGE NUMBER:	9 OF 9			